






## 25 Jersey Road Matraville NSW

3  2  2 

Simply breathtaking, complimented with the finest materials and cutting-edge inclusions throughout whilst providing an entertainers floorplan with generous living areas that create the perfect entertaining environment.

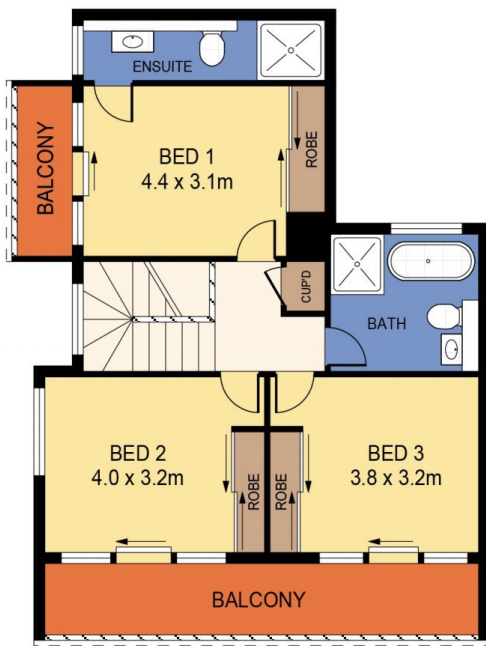
Spanning over two levels, highlights include:

- \*3 Large bedrooms with built-ins
- \*Master ensuite with private balcony
- \*Front facing bedrooms with huge balcony overlooking park
- \*Entertainers lounge and dining with park views throughout leading on to a low maintenance yard perfect for entertaining
- \*Gourmet gas kitchen complimented with oven and dishwasher all
- \*Internal laundry with integrated dryer and washing machine

**View :** <https://www.rre.com.au/7832640>



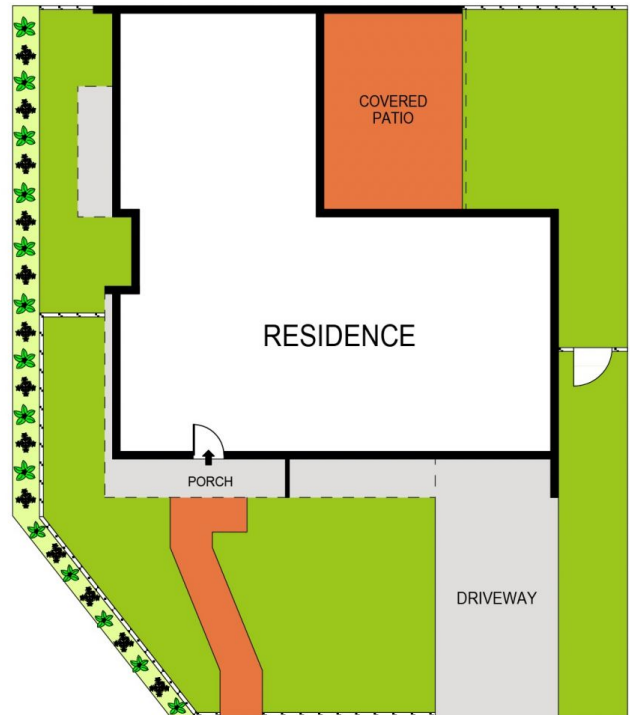
**Andrea Kyriakou**  
**02 9667 2868**



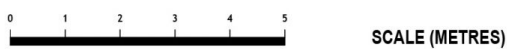
**FIRST FLOOR**



**GROUND FLOOR**



**SITE PLAN**  
(NOT TO SCALE)



PLANS SHOWN ONLY INDICATIVE OF LAYOUT. DIMENSIONS ARE APPROXIMATE.  
Ref. No: 71135



25 JERSEY ROAD

MATRAVILLE