




7/1 Myrtle Street Botany NSW

3  3  3 

Perfectly located opposite Botany Aquatic Centre and Booralee Park, this extra large tri-level townhouse offers the best in lifestyle and convenience. Perfect for the family and situated in a boutique complex, the property is well presented throughout whilst offering scope to modernize into your dream family residence. Boasting a total of 278SQM on title, the property is enhanced by a free-flowing entertainers floorplan.

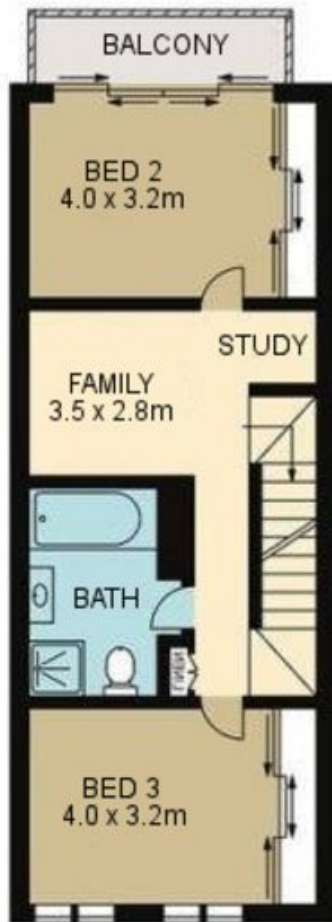
View : <https://www.rre.com.au/7547873>

Features include:

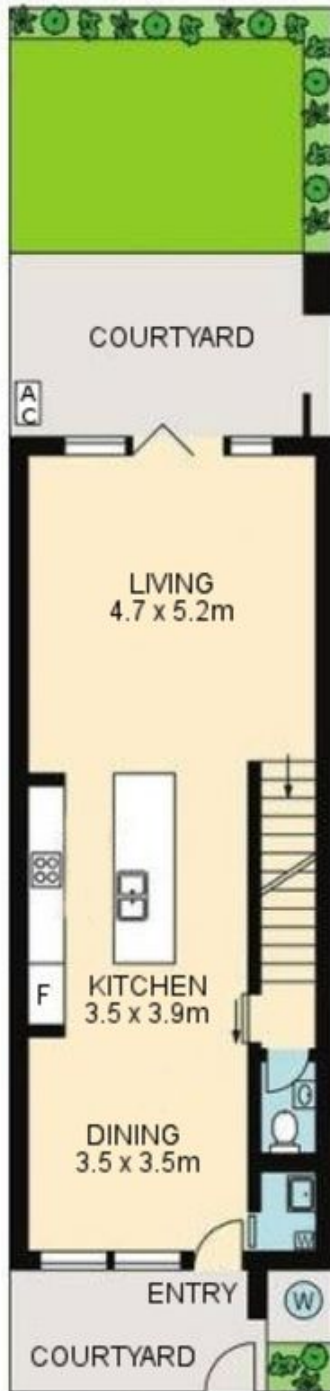
- * Huge living spaces, spanning over 4 levels in total, including basement garage and entire top floor master suite
- * Three large bedrooms all with built-ins
- * Separate family room
- * Separate and spacious living and dining areas
- * Ducted air-conditioning throughout
- * Large main and en-suite, both with bath tubs as well as



Michael Michos
0296672868



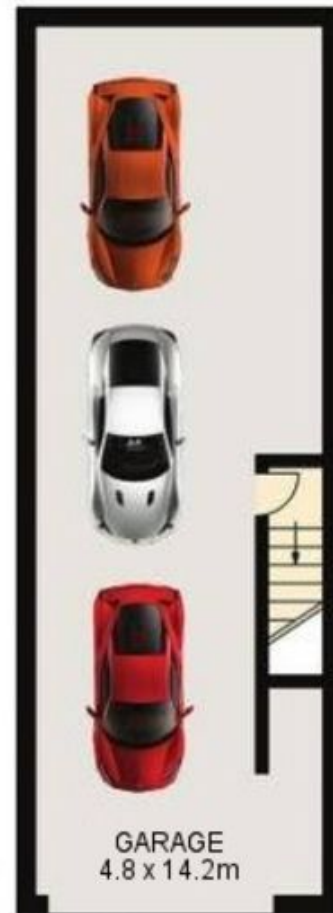
FIRST LEVEL



GROUND LEVEL



SECOND LEVEL



BASEMENT LEVEL



7/1 MYRTLE STREET BOTANY

DISCLAIMER: ARTUM PLANS SHOWN ARE FOR PRESENTATION PURPOSES & ARE NOT PART OF ANY LEGAL DOCUMENT. ALL MEASUREMENTS & FIGURES ARE APPROXIMATE. FLOOR PLANS, PHOTOGRAPHY & GRAPHIC DESIGN BY ARTUMPROPERTYMARKETING.COM.AU