

607/18 Park Lane Chippendale NSW

1  1 

Located on level six of the award-winning Mark building of the Central Park development, this as new north facing apartment cleverly combines functionality and luxury in what is the perfect first home or savvy investment.

Features:

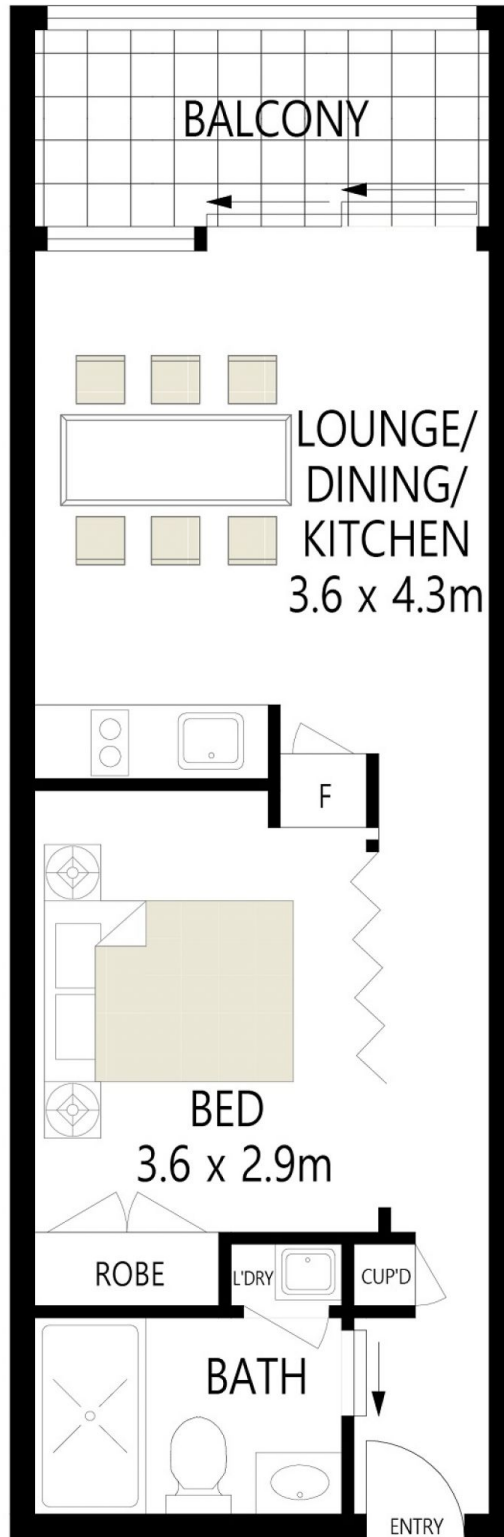
- *Timber flooring throughout
- *Spacious bedroom with built-it wardrobe
- *Designer main bathroom with integrated laundry
- *Gourmet stone bench kitchen with Smeg gas cooking and dishwasher
- *Ducted Air-conditioning
- *Basement Storage cage on title
- *Enclosed spacious floor to ceiling glass balcony, perfect for your alfresco experience

For your convenience, head to the level 24 rooftop oasis which boasts a bbq, spa and sweeping city views. There's

View : <https://www.rre.com.au/7222169>



Michael Michos
0296672868



WE BELIEVE THE INFORMATION IN THIS DOCUMENT TO BE RELIABLE. HOWEVER INTERESTED PERSONS SHOULD MAKE THEIR OWN ENQUIRIES. DIMENSIONS ARE APPROXIMATE.

607/18 Park Lane, Chippendale