



### 12 Banksia Street Botany NSW

Looking to create your own vision in one of Botany's premier streets? Bring your architect, builder and let your dreams become a reality with this huge approximately 613sqm block in one of Botany's most sought after locations. Presented as land value, this dilapidated cottage is located approximately 100m to Botany shops and just a short stroll to Booralee Parka and Botany Aquatic centre.

#### Features:

- \*Original 3 Bedroom cottage in need of total repair
- \*Land approximately 613sqm
- \*Dimensions approximately 12.19m x 51.2m

Perfect to knock down and rebuild subject to council approval on this substantial land size. A definite sale and must be sold.

3  1  1 

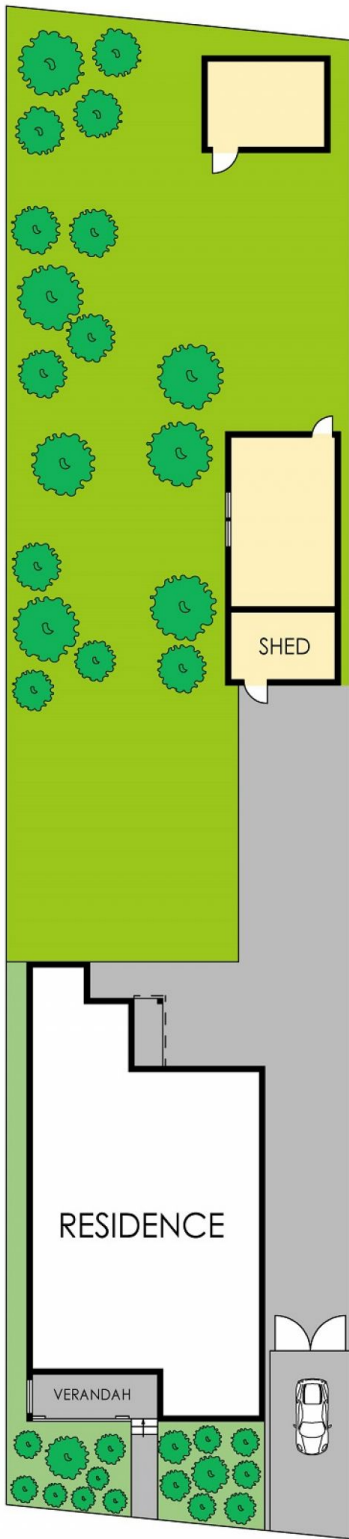
**Price** : \$ 2,000,500

**Land Size** : 613 sqm

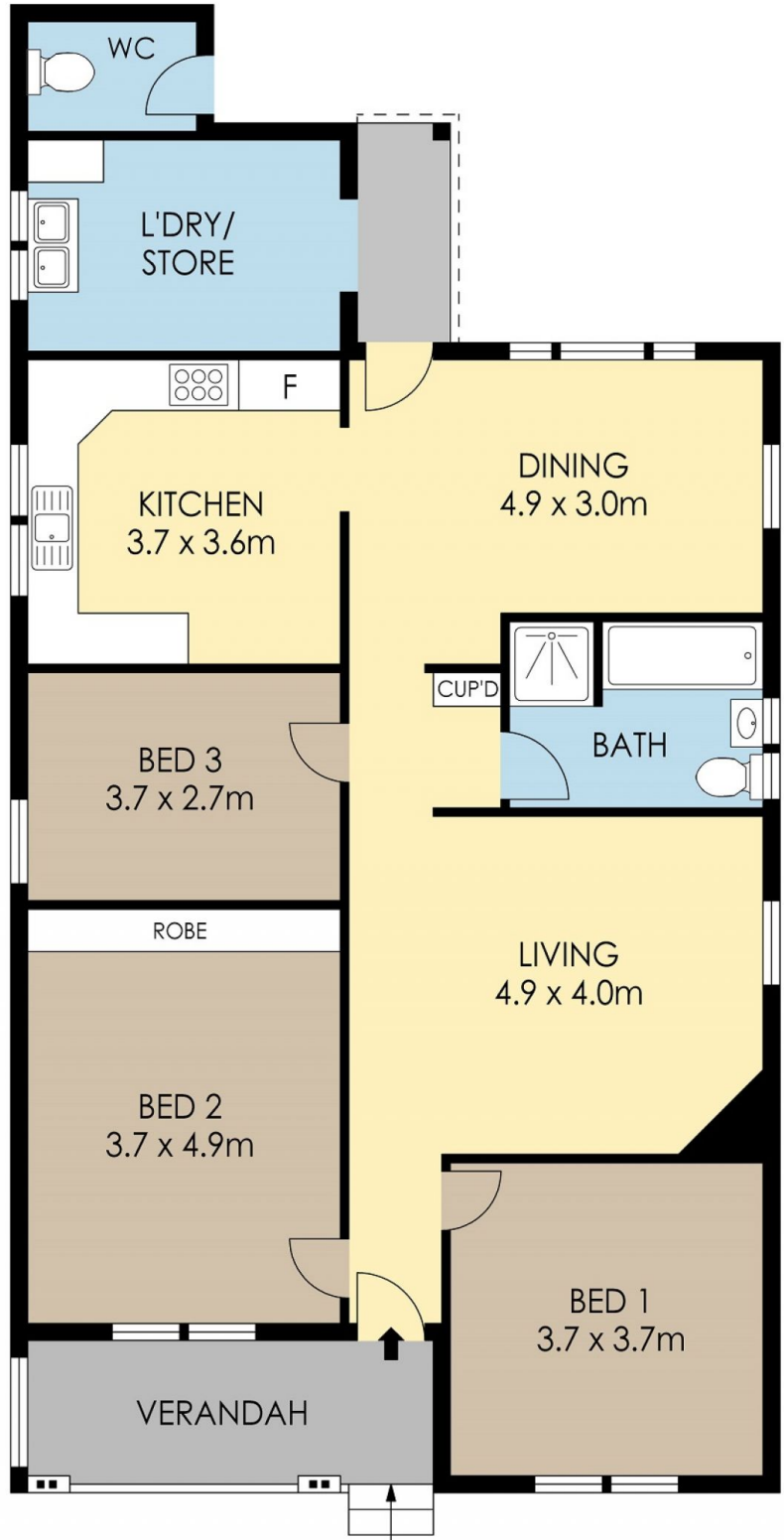
**View** : <https://www.rre.com.au/6899973>



**Michael Michos**  
**0296672868**



**SITE PLAN**



PLANS SHOWN ONLY INDICATIVE OF LAYOUT. DIMENSIONS ARE APPROXIMATE.

# 12 Banksia Road, Botany