



B606/28 Ebsworth Street Zetland NSW

1  1 

****TO APPLY WITH 1 FORM CODE IS "RRE"**

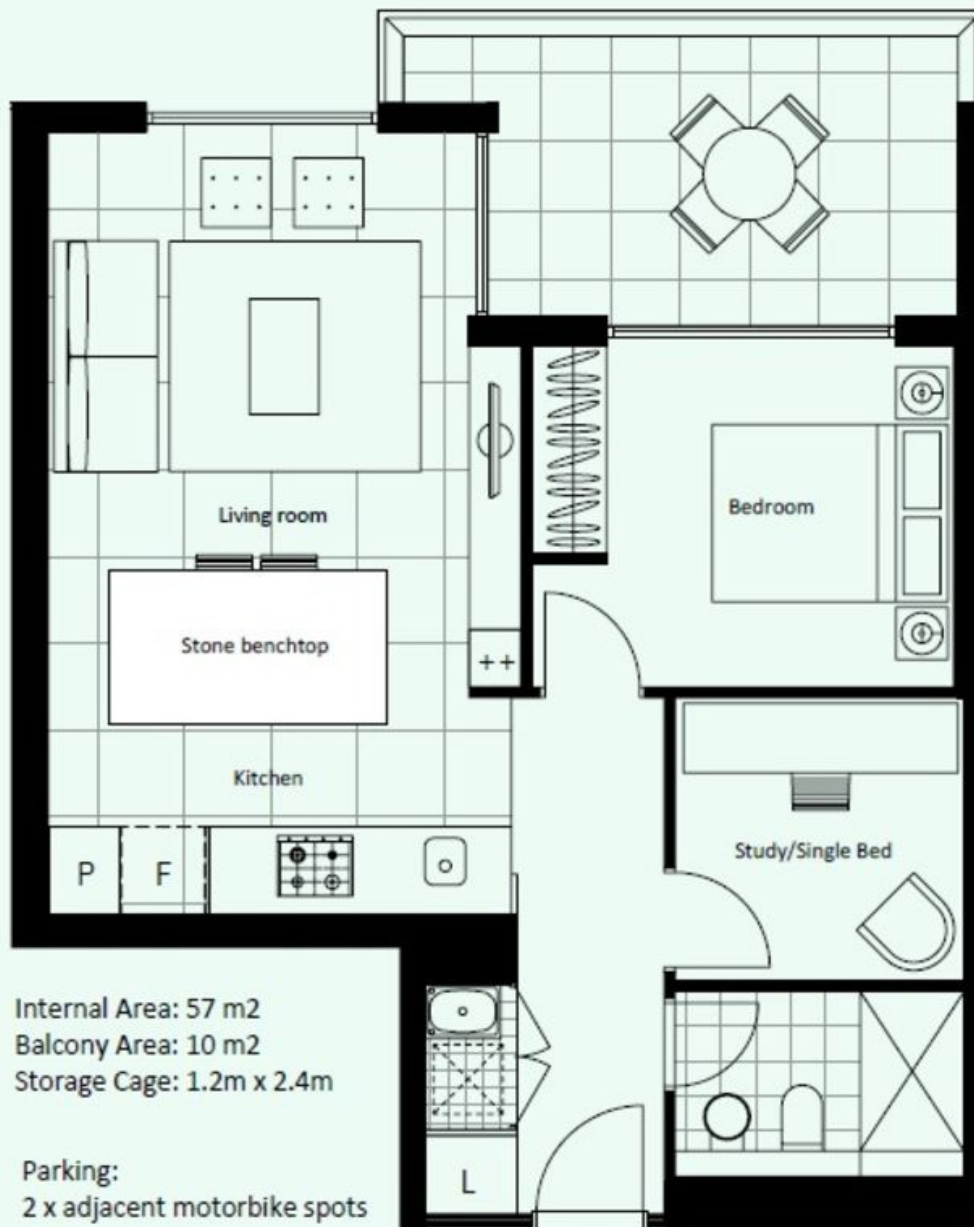
As near new one bedroom apartment with study. Positioned on level 6 with lift access is this recently completed Ebsworth Green Square development, this state of the art property has it all. Features include:

- * Main bedroom with built-ins
- * Large study room can accommodate a single bed with study table and chair
- * Bright combined living and dining area, with built-in media shelving
- * Designer bathroom with frame-less shower
- * Ultra modern kitchen with stone bench tops and island, with state of the art stainless steel Miele & Smeg appliances
- * Internal laundry with Fisher & Paykel dryer
- * Carpeted & tiled throughout

View : <https://www.rre.com.au/6150622>



Andrea Kyriakou
02 9667 2868



LEVEL 6

