



### 58A Denison Street Hillsdale NSW

5  3  3 

On offer is this oversized family home. With floorboards and tiling throughout, this property is ready to occupy immediately. Features include:

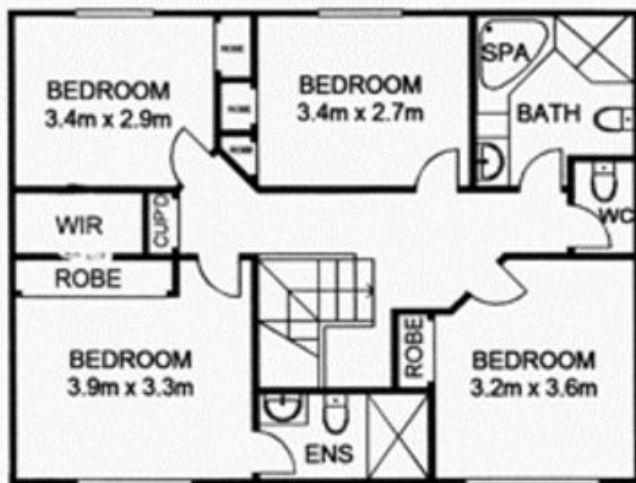
- \* 5 double bedrooms, some with builtins
- \* two full bathrooms, main with tub and ensuite off main bedroom
- \* large open plan living area
- \* formal and informal dining areas
- \* modern eat-in kitchen, with breakfast bar and stainless steel appliances
- \* internal laundry with direct access to side of house
- \* double lock up garage with additional off-street parking

Positioned at the rear of a large block, this house offers rare privacy with no direct noise from the street. Just minutes from Southpoint and Westfield Eastgardens, as well as plenty of school options in the area. Also with

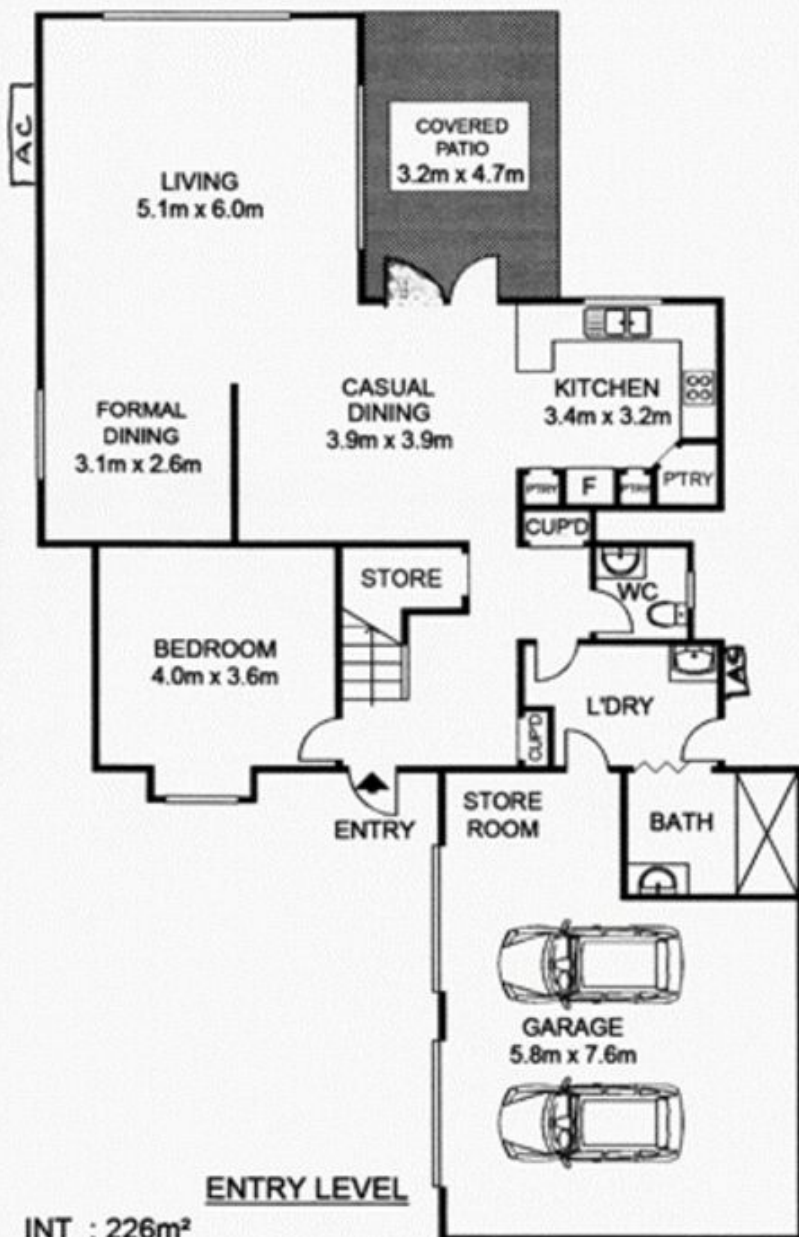
**View :** <https://www.rre.com.au/5546539>



**Andrea Kyriakou**  
**02 9667 2868**

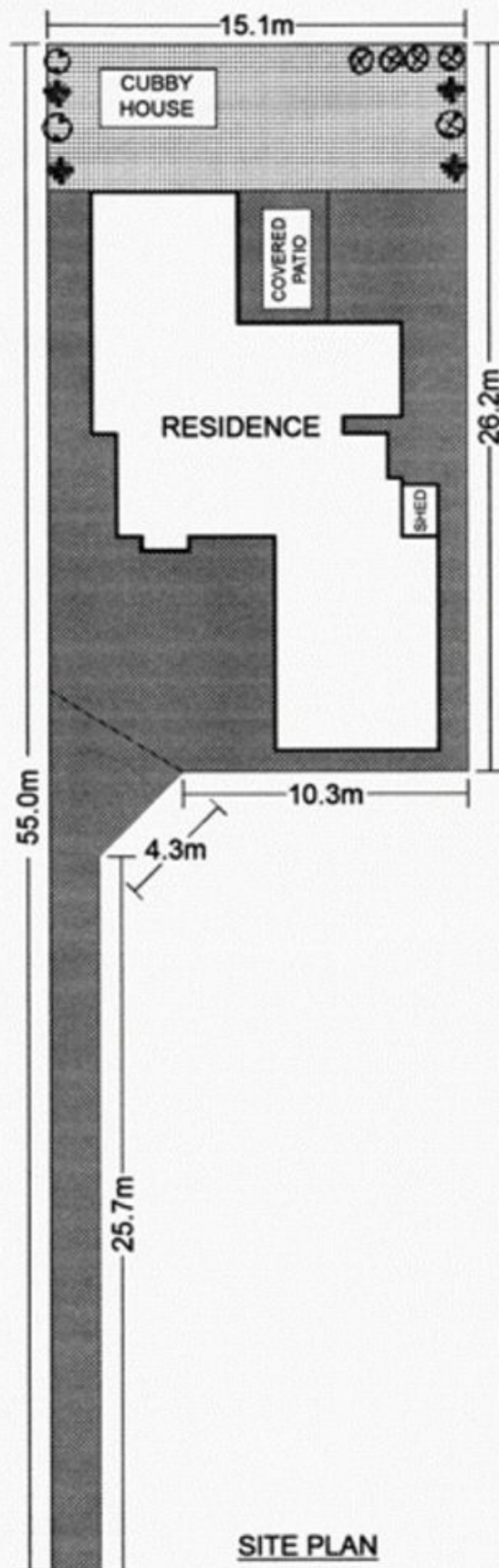


UPPER LEVEL



ENTRY LEVEL

INT : 226m<sup>2</sup>



SITE PLAN



Scale shown in metres. All dimensions herein are approximate and gathered from sources believed to be reliable. Whilst every effort is made for the accuracy of our floor plans, interested parties should rely on their own enquiries. Floor Plans by Industrie Media | [industriemedia.tv](http://industriemedia.tv)