




**3/1 Myrtle Street Botany NSW**

3  2  3 

Sumptuously finished in a crisp contemporary style, creating a new benchmark for Botany. Located in the best location, opposite Botany Aquatic Centre and Booralee Park, this fine properties offer the best in lifestyle and convenience. Features include:

- \* 3 large Bedrooms over 2 levels all with built-ins
- \* Huge master bedroom occupying entire 3rd level
- \* Family and study rooms
- \* Daiken air-conditioning throughout
- \* Separate and spacious living and dining areas
- \* Floorboards and carpet throughout
- \* Large bathrooms and en-suite bathroom with quality inclusions
- \* Stunning stone gourmet kitchen with Smeg gas cooking and dishwasher
- \* Front yard with private entry and dual access
- \* Expansive low maintenance rear entertainers courtyard

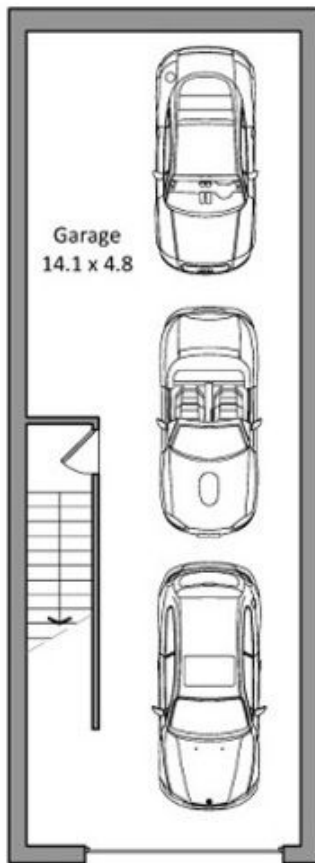
**View :** <https://www.rre.com.au/5325884>



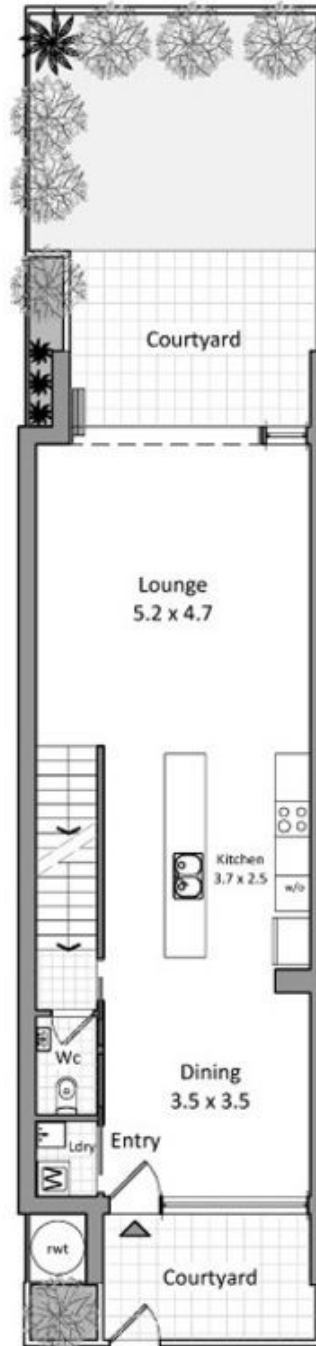
**Andrea Kyriakou**  
**02 9667 2868**



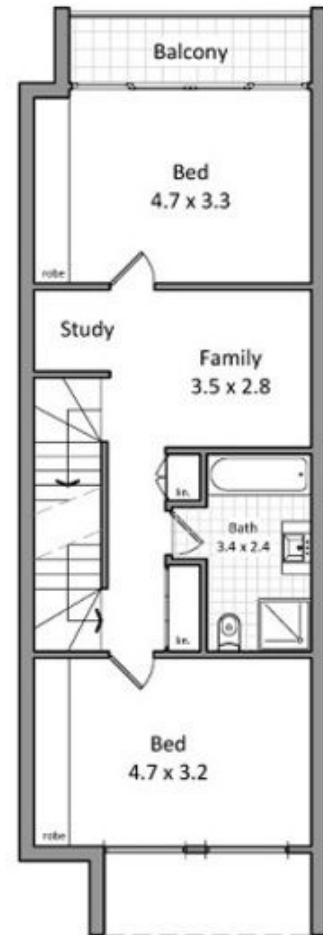
Level 2 floor plan



Basement level floor plan



Ground level floor plan



Level 1 floor plan