

1/90-92 Cope Street Waterloo NSW

2  1 

A wonderful opportunity for the first time homebuyer or savvy investor, this ground floor entertainer is located in one of the city's hippest and growing locations. Boasting a private entrance and free flowing floorplan to outdoor living, features include:

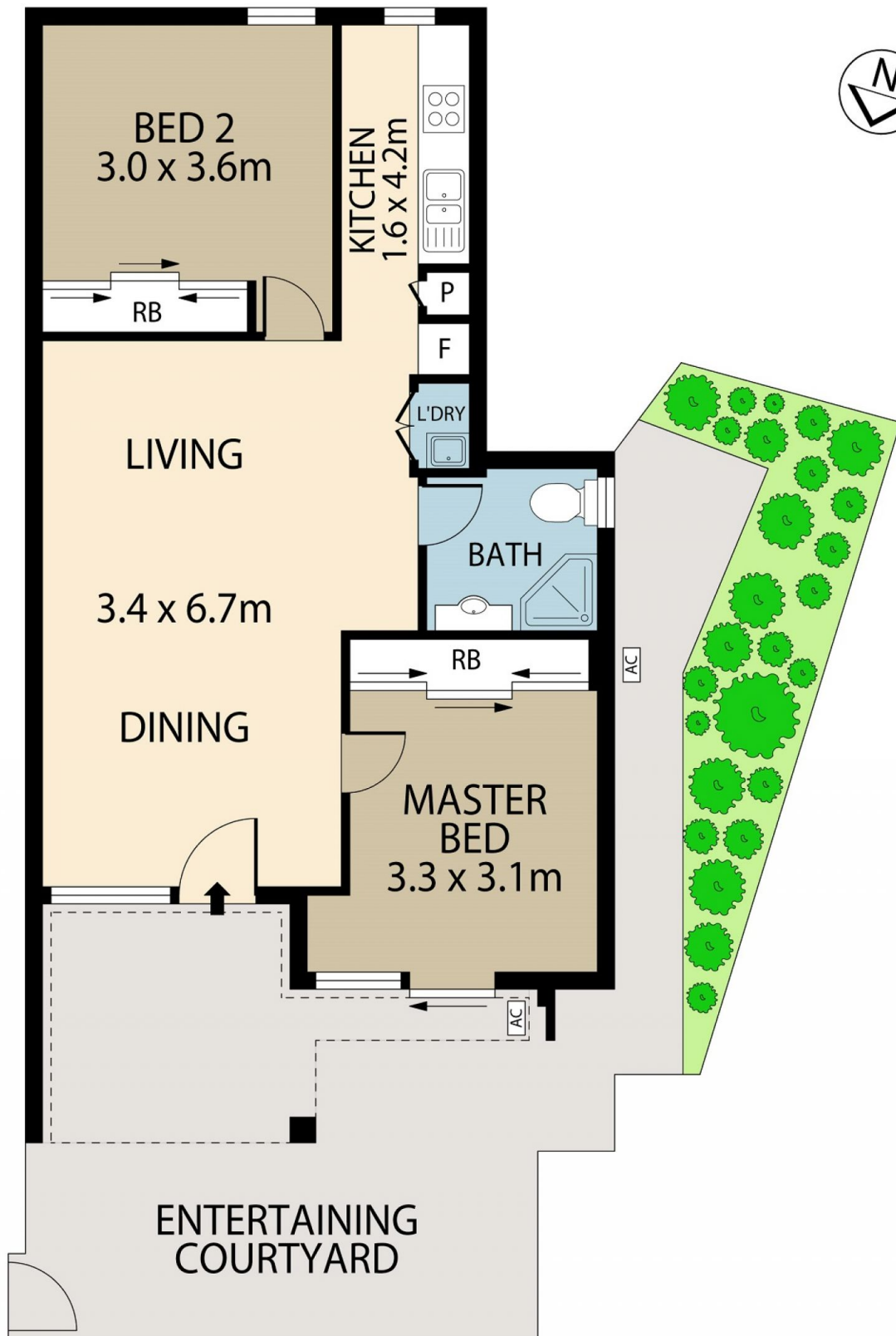
- *2 large bedrooms with build-ins
- *Spacious lounge and dining leading to expansive wrap around courtyard
- *Stone bench gas kitchen with dishwasher
- *Immaculate main bathroom
- *Internal laundry and security intercom
- *Total Area on title : 108sqm

Peaceful and private, the property is located on the edge of a hip café scene, a short walk to Technology Park, Redfern Station and within one minute's stroll of the new Metro station.

View : <https://www.rre.com.au/5298716>



Michael Michos
0296672868



GROUND LEVEL



1/92-110 COPE STREET, WATERLOO

DISCLAIMER: ARTUM PLANS SHOWN ARE FOR PRESENTATION PURPOSES & ARE NOT PART OF ANY LEGAL DOCUMENT. ALL MEASUREMENTS & FIGURES ARE APPROXIMATE. FLOOR PLANS, PHOTOGRAPHY & GRAPHIC DESIGN BY ARTUMPROPERTYMARKETING.COM.AU