



607/18 Park Lane Chippendale NSW

1  1 

This as new studio-style unit is living at its finest. Situated in the recently completed Mark building, the unit is a part of the Central Park development in Chippendale. Features include:

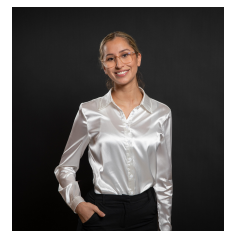
- * One bedroom
- * State of the art kitchen with stone bench tops & appliances including dishwasher & fridge
- * Ultra modern bathroom
- * Internal laundry with washing machine & dryer
- * Ducted air conditioning
- * Timber flooring throughout
- * Private loggia, bringing the outdoors indoors
- * Separate storage available

The Mark has direct access to a 24th floor spa and barbeque area, gymnasium, an outdoor pool and some of

View : <https://www.rre.com.au/5153001>



Michael Michos
0296672868



Andrea Kyriakou
02 9667 2868