




4/1 Myrtle Street Botany NSW

3  2  3 

Sumptuously finished in a crisp contemporary style and located in the best location, opposite Botany Aquatic Centre and Booralee Park, this townhouse offers a great lifestyle in this enviable location.

Some of the many features include:

- * Three large Bedrooms over 2 levels all with built-ins
- * Separate and spacious living and dining
- * Daiken air-conditioning throughout
- * Solid timber "yaomoo" flooring
- * Large bathrooms and en-suite bathrooms with quality inclusions
- * Gourmet kitchen with Smeg gas cooking & dishwasher
- * Dorani security intercom and touch lighting throughout
- * Huge Master bedrooms occupying entire 3rd level
- * Front yard with private entry and dual access

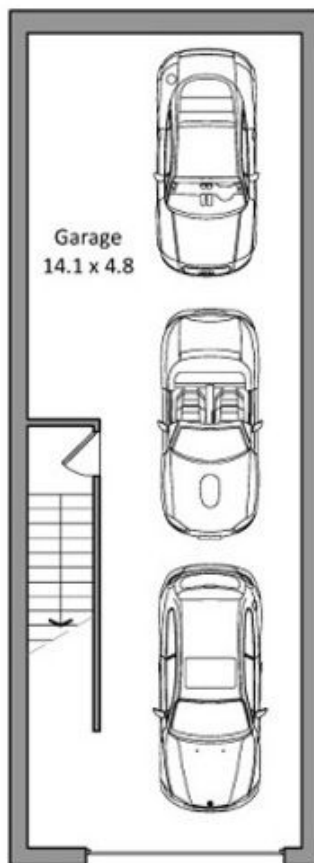
View : <https://www.rre.com.au/5132321>



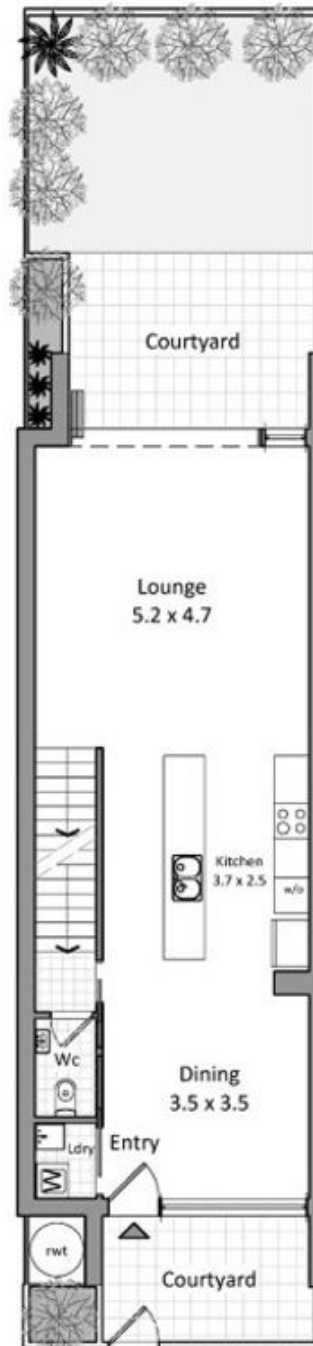
Andrea Kyriakou
02 9667 2868



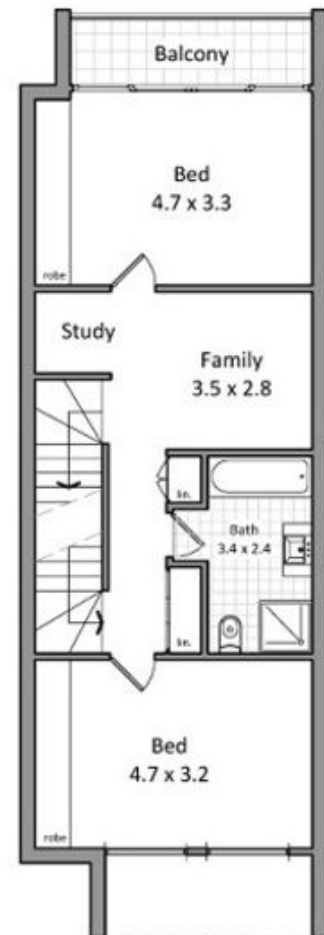
Level 2 floor plan



Basement level floor plan



Ground level floor plan



Level 1 floor plan