



1 Aloha Street Mascot NSW

3  1  1 

This is the property you have been waiting for! Located in one of Mascot's finest streets directly opposite Memorial Park and courts, this classic double brick family home offers all the great fundamentals of a forever home.

Well presented throughout with period features, the property has enormous potential to further enhance into your dream residence and capitalise on this unbeatable location.

Features include:

- * 2-3 Bedrooms
- * Separate lounge and dining with ornate ceilings and lead-light windows
- * Updated kitchen and tidy main bathroom
- * Rear sun-room/dining / 3rd room
- * Huge backyard perfect for kids and entertaining

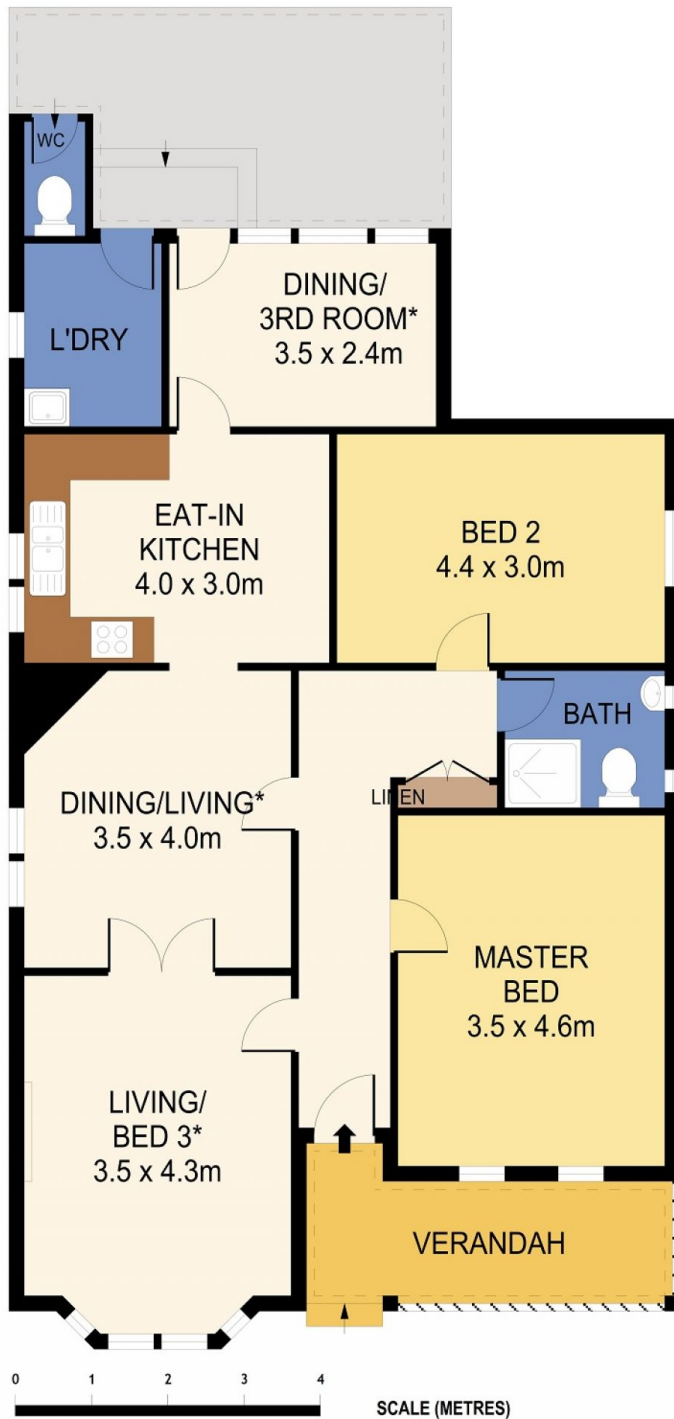
Land Size : 471 sqm
View : <https://www.rre.com.au/5089417>



Michael Michos
0296672868

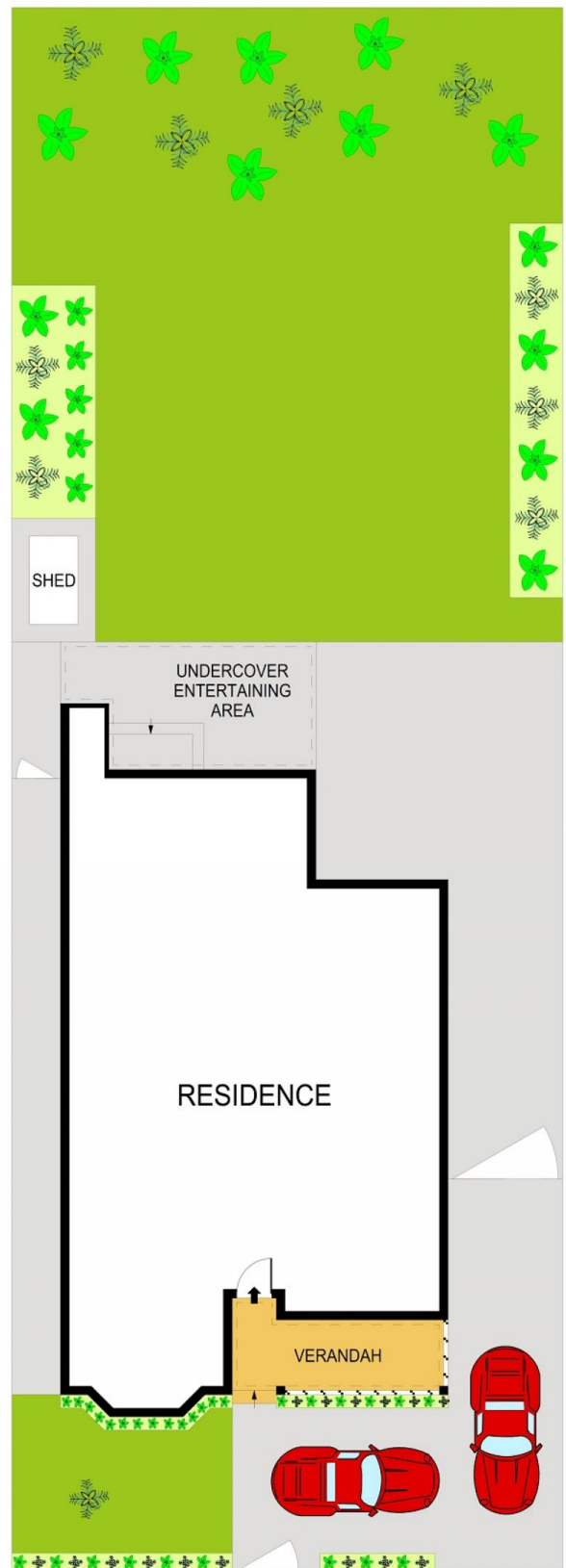


Jim Michos
0296672868



PLANS SHOWN ONLY INDICATIVE OF LAYOUT. DIMENSIONS ARE APPROXIMATE.
Ref. No: 76162

*Denotes possible living arrangement



SITE PLAN
(NOT TO SCALE)



1 ALOHA STREET

MASCOT