



648/83-93 Dalmeny Avenue ROSEBERY NSW

1  1 

View : <https://www.rre.com.au/4874218>

On offer, this affordable entry level apartment located in the resort style 'Kimberly Estate' complex in the heart of Rosebery. Original yet well-presented throughout, this apartment is the perfect first home buyer offering or executive rental in this renowned complex. Featuring:

- *Open living/dining extending to a large open balcony
- *Spacious bedroom with built-in wardrobe
- *Versatile granite topped kitchen with stainless gas appliances
- *Immaculate main bathroom with internal laundry
- * Air-conditioning and wooden floors
- *Separate lock-up storage cage on title

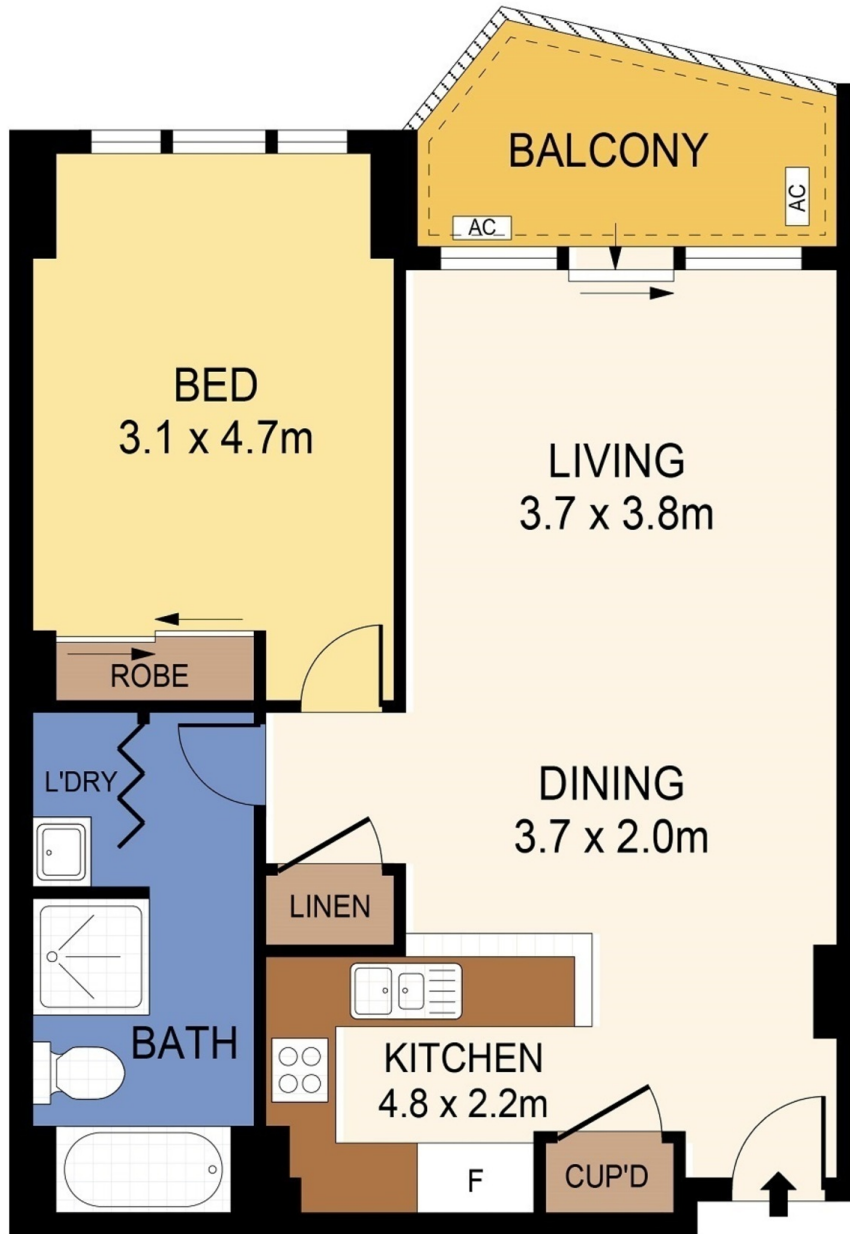
Set within a secure building offering lift and intercom entry, recently refurbished gym, indoor pools, sauna, spa, squash court plus childcare facilities and 24hour security. The



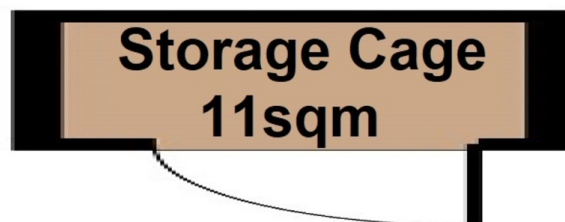
Michael Michos
0296672868



Jim Michos
0296672868



LEVEL THREE



PLANS SHOWN ONLY INDICATIVE OF LAYOUT. DIMENSIONS ARE APPROXIMATE.
Ref. No:72273

