



**310/791-795 Botany Road ROSEBERY NSW**

**2  2  1 **

Located in the exciting 'Loom' apartment complex, this gorgeous luxurious apartment is located on level three with district views and plenty of cross flow ventilation. Boasting approximately 96sqm, this property features:

- \* Two large bedrooms, second with balcony access, both with built-ins
- \* Expansive timber floored lounge and dining leading to large private balcony
- \* Luxurious full main bath plus en-suite bathroom
- \* Stunning designer gas kitchen with gas cooking and dishwasher
- \* Internal laundry with dryer, 2 large balconies
- \* Full security intercom
- \* Direct level lift access to security parking.

First class location with bus transportation at your door, Green Square Station just moments away and only 10

**Price : \$ 750,000**

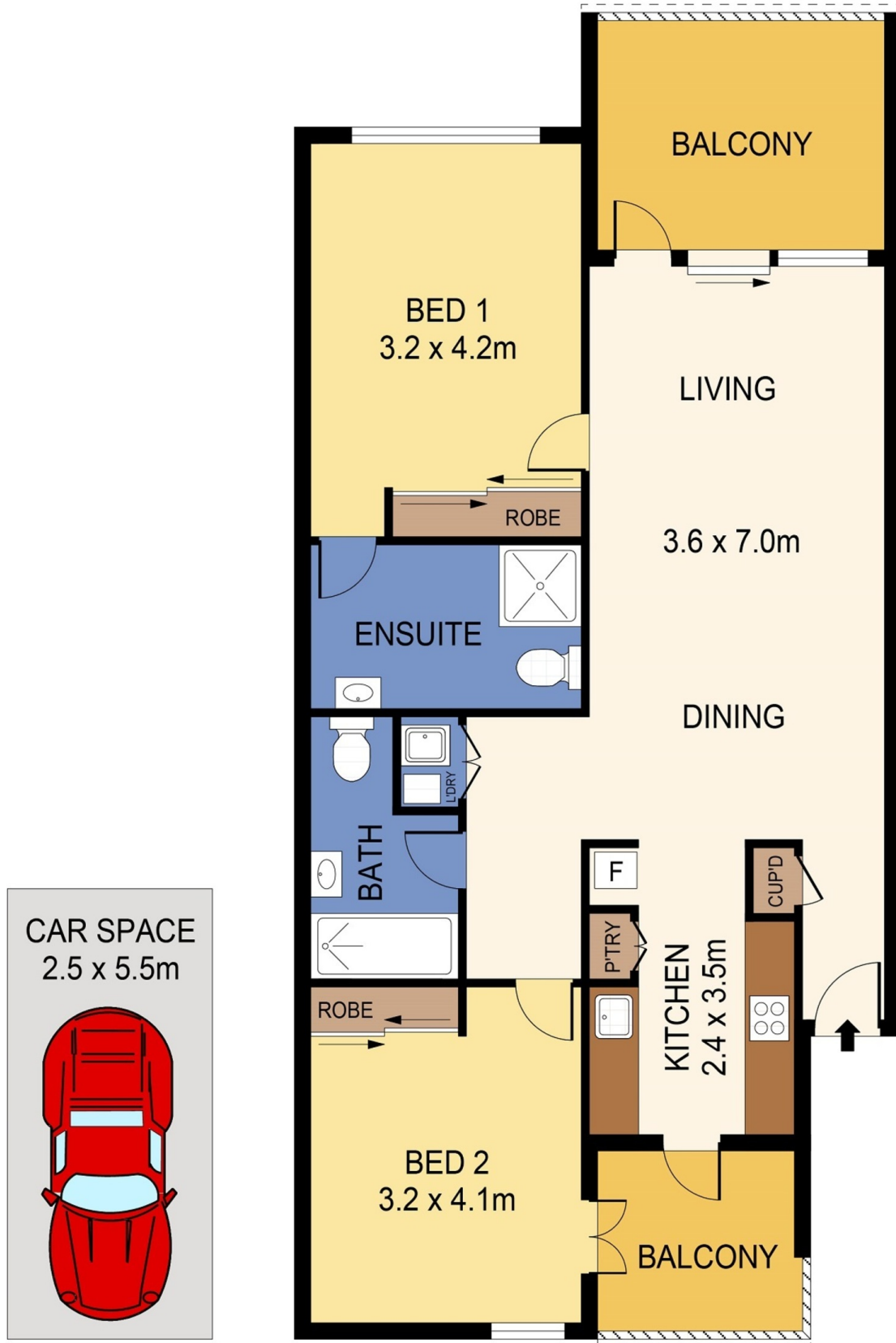
**View : <https://www.rre.com.au/4407728>**



**Michael Michos**  
**0296672868**



**Jim Michos**  
**0296672868**



## LEVEL THREE



PLANS SHOWN ONLY INDICATIVE OF LAYOUT. DIMENSIONS ARE APPROXIMATE.  
Ref. No: 64350

310/791 BOTANY ROAD

ROSEBERRY