

1 Myrtle Street BOTANY NSW

3.500



Sumptuously finished in a crisp contemporary style, creating a new benchmark for Botany. Located in the best location, opposite Botany Aquatic Centre and Booralee Park and within the Pagewood Public School catchment, this fine property offers the best in lifestyle and convenience. Some of the many features include:

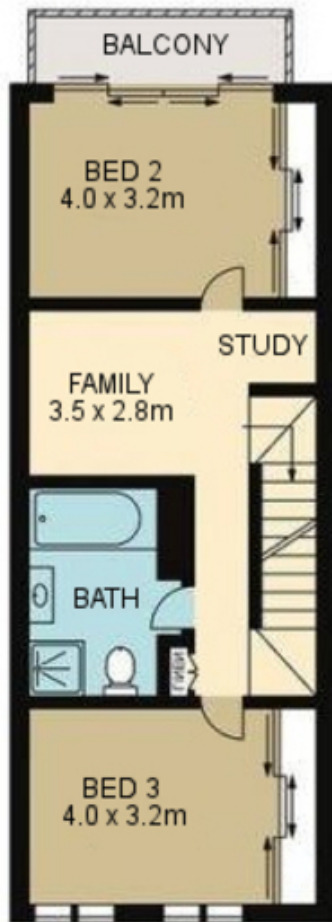
- * huge living spaces, spanning over 4 levels in total, including basement garage and entire top floor master suite
- * 3 large Bedrooms all with built-ins
- * separate family room
- * separate and spacious living and dining areas
- * ducted air-conditioning throughout
- * floorboards and carpet throughout
- * large main and en-suite bathrooms, both with bath tubs and quality inclusions, as well as additional W/C
- * stunning stone gourmet kitchen with Smeg gas cooking and dishwasher

Price : \$ 1,100

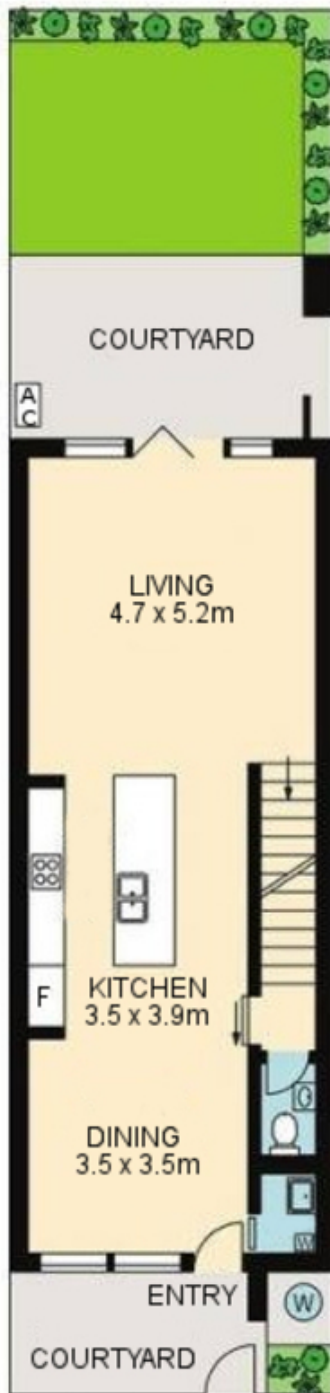
View : <https://www.rre.com.au/3985427>



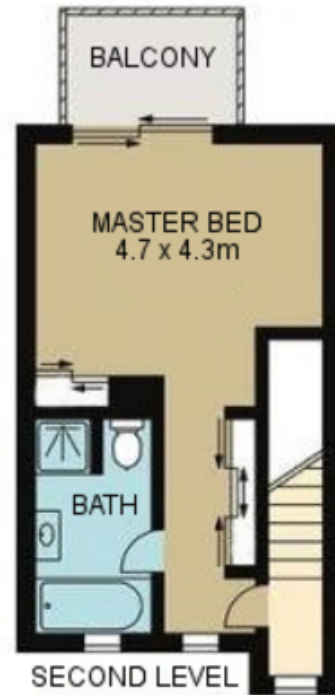
Michael Michos
0296672868



FIRST LEVEL



GROUND LEVEL



SECOND LEVEL



BASEMENT LEVEL



7/1 MYRTLE STREET BOTANY

DISCLAIMER: ARTUM PLANS SHOWN ARE FOR PRESENTATION PURPOSES & ARE NOT PART OF ANY LEGAL DOCUMENT. ALL MEASUREMENTS & FIGURES ARE APPROXIMATE. FLOOR PLANS, PHOTOGRAPHY & GRAPHIC DESIGN BY ARTUMPROPERTYMARKETING.COM.AU