



2/22 Barber Avenue EASTLAKES NSW

1  1  1 

RRE is proud to offer this rare, perfect entry level first home or investment situated on the first floor of one of Eastlakes finest, newly refurbished security buildings. Located conveniently opposite the Eastlakes Shopping Center and main park, this unit is ripe for renovation and presents a terrific opportunity to add future value. Features include:

- *Large main bedroom
- *Spacious combined lounge and dining
- *Tidy Kitchen
- *Original full bathroom
- *Separate downstairs lock-up laundry with tub
- *Private rear side driveway leading to carspace.

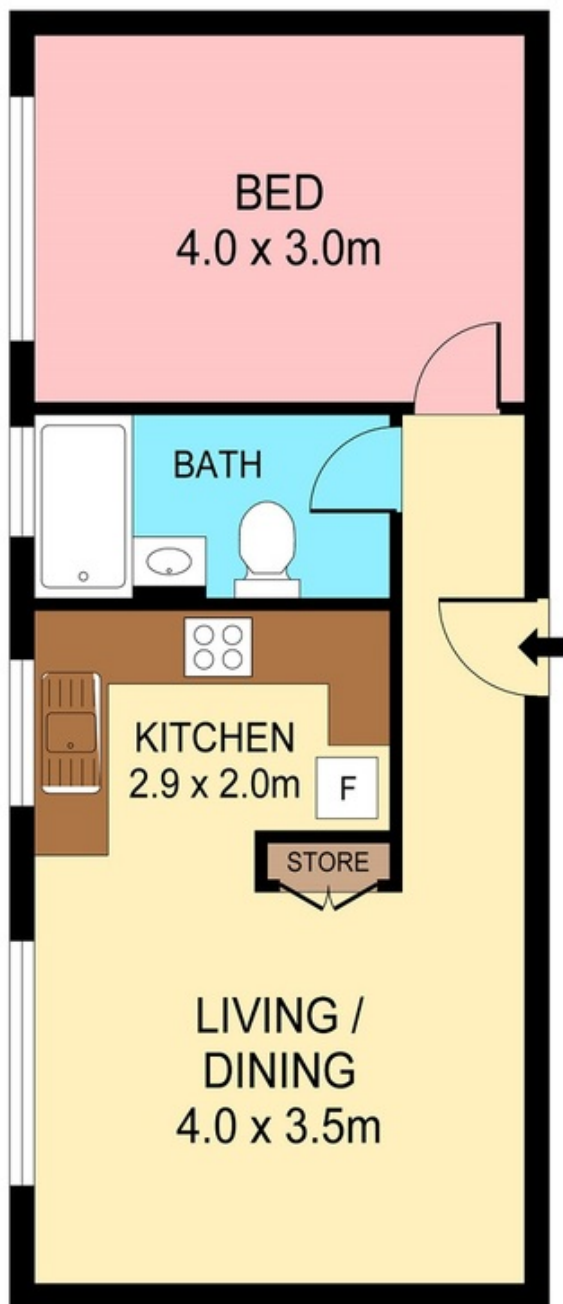
This building is one of the best in Eastlakes having undergone an impressive transformation and boasting the exclusivity of being just a stone throw from the future brand new Eastlakes shopping centre, bus transportation and only 10 minutes to Sydney's CBD. Eastlakes is quick

Price : \$ 470,000

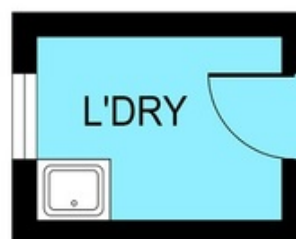
View : <https://www.rre.com.au/3817898>



Michael Michos
0296672868



LEVEL ONE



GROUND LEVEL



2/22 Barber Avenue Eastlakes

DISCLAIMER: ARTUM PLANS SHOWN ARE FOR PRESENTATION PURPOSES & ARE NOT PART OF ANY LEGAL DOCUMENT. ALL MEASUREMENTS & FIGURES ARE APPROXIMATE.