



22a George Street EASTLAKES NSW

4  1  2 

RRE Properties is proud to offer this charming family home perfect for the large family and nestled in one of the area's finest streets. Boasting great fundamentals such as double brick construction, north facing aspect and extra large land, this home is presented in immaculate original condition whilst offering further scope to extend or modernise (STCA) should you wish. Main features include:

- *4 large bedrooms with built-ins
- *Spacious north facing lounge and dining
- *Immaculate eat-in timber kitchen
- *Updated main bathroom
- *Internal laundry, 2nd w/c
- *Fully ducted air-conditioning throughout
- *Massive backyard and undercover patio perfect for entertaining
- *Lock-up garage and carspace
- *Land approximately 550sqm

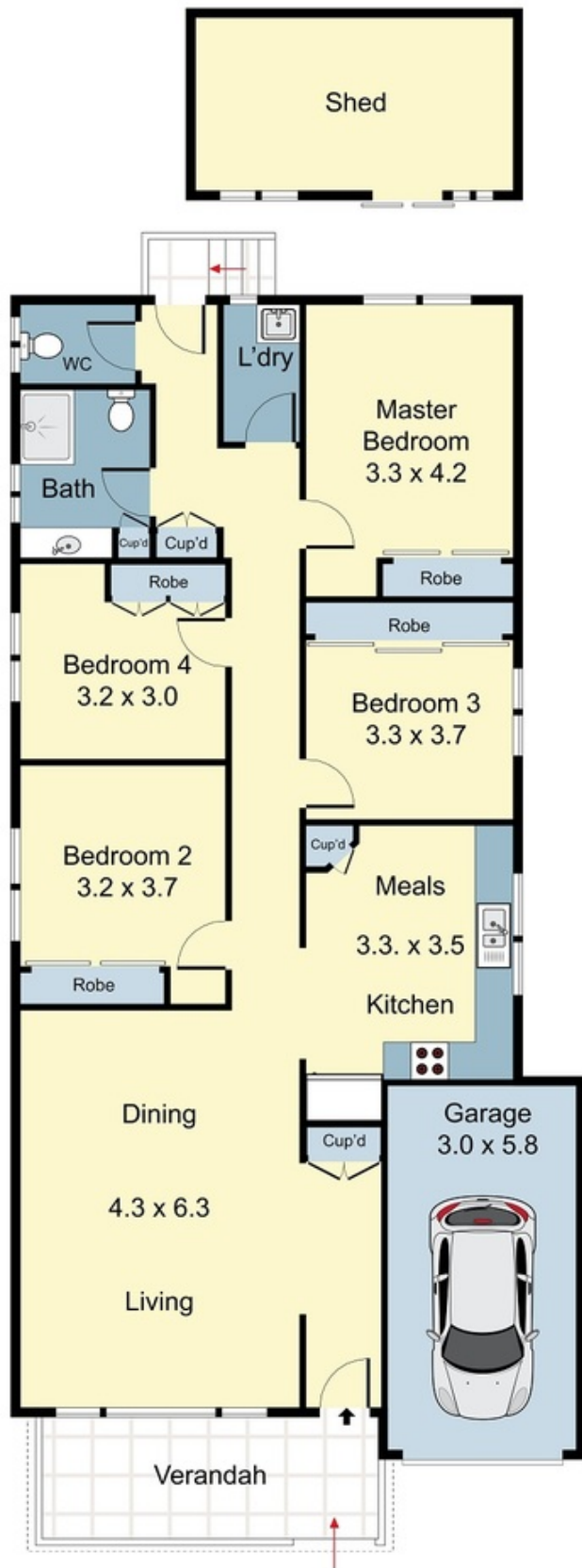
Price : \$ 1,750,000
Land Size : 550
View : <https://www.rre.com.au/3275970>



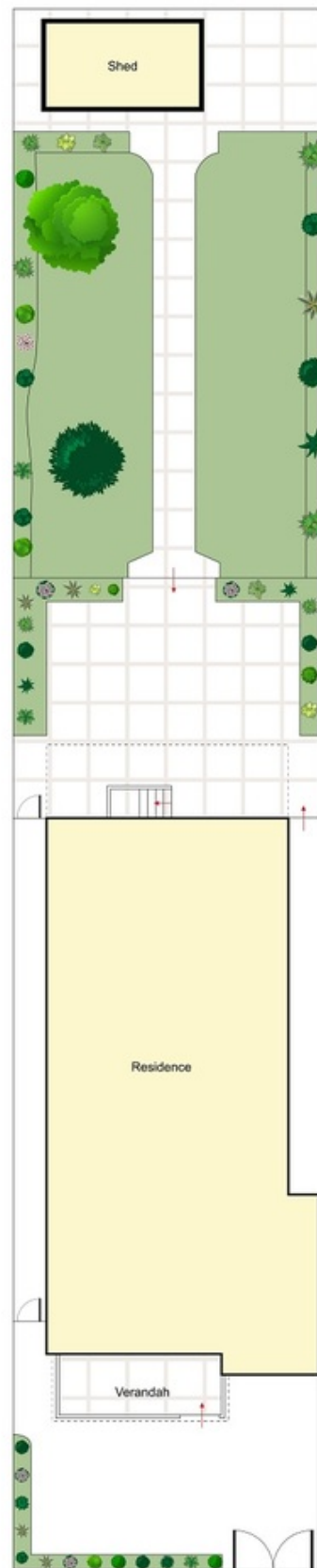
Michael Michos
0296672868



Jim Michos
0296672868



Ground Floor



Site Plan



22A George Street, Eastlakes



DISCLAIMER: PLANS SHOWN ARE FOR PRESENTATION PURPOSES AND ARE NOT PART OF ANY LEGAL DOCUMENT. ALL MEASUREMENTS AND FIGURES ARE APPROXIMATE.