





2/1 Myrtle Street BOTANY NSW

3  2.500

 2 

On offer is this massive, as new three level townhouse. Beautifully presented and finished in a crisp contemporary style, features include:

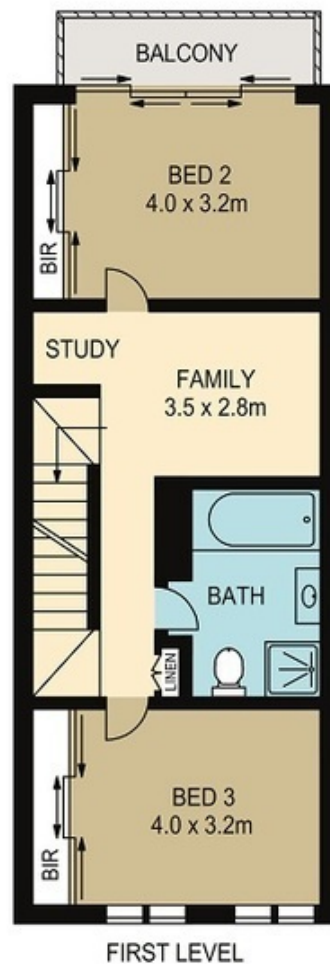
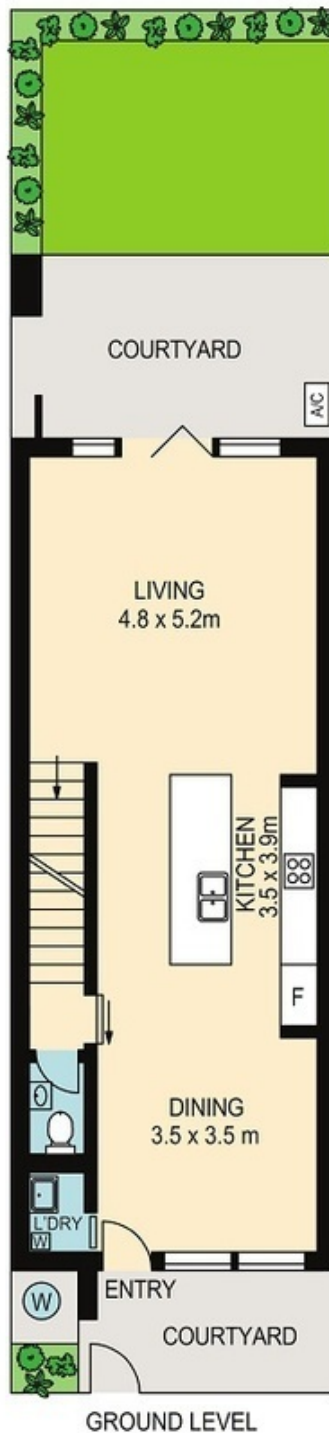
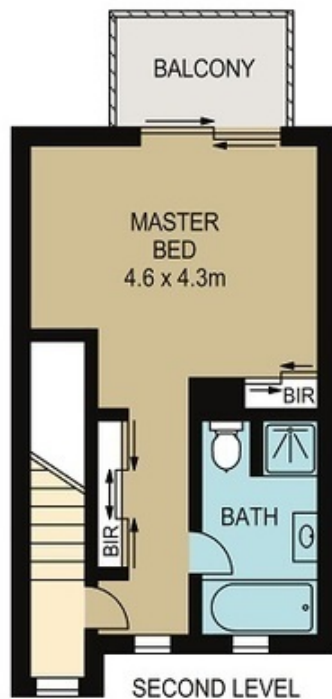
- * three bedrooms, main with ensuite
- * separate spacious living and dining areas
- * additional second floor living area, perfect for home study
- * immaculately presented kitchen with stone bench tops and Smeg appliances, including dishwasher
- * timber flooring on entry level, carpeted second and third floors
- * large main bathroom with bath and shower, second w/c on entry floor
- * ducted air conditioning throughout
- * security intercom
- * easy to maintain front and rear courtyards
- * internal access to double remote access garage

Price : \$ 1,050

View : <https://www.rre.com.au/3080628>



Michael Michos
0296672868



2/1 MYRTLE STREET

BOTANY

DISCLAIMER: ARTUM PLANS SHOWN ARE FOR PRESENTATION PURPOSES & ARE NOT PART OF ANY LEGAL DOCUMENT. ALL MEASUREMENTS & FIGURES ARE APPROXIMATE. FLOOR PLANS, PHOTOGRAPHY & GRAPHIC DESIGN BY ARTUMPROPERTYMARKETING.COM.AU