



2/1 Myrtle Street BOTANY NSW

3  2  2 

RRE Properties is proud to present this as new massive (278 sqm on title) three level townhouse beautifully finished in a crisp contemporary style, creating a new benchmark for Botany. Located in a tightly held pocket opposite Botany Aquatic Centre and Booralee Park, this home offers the best in lifestyle and convenience.

Some of the many features include:

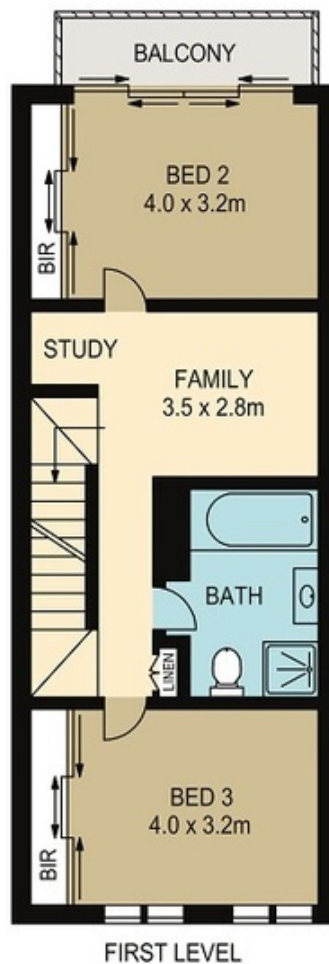
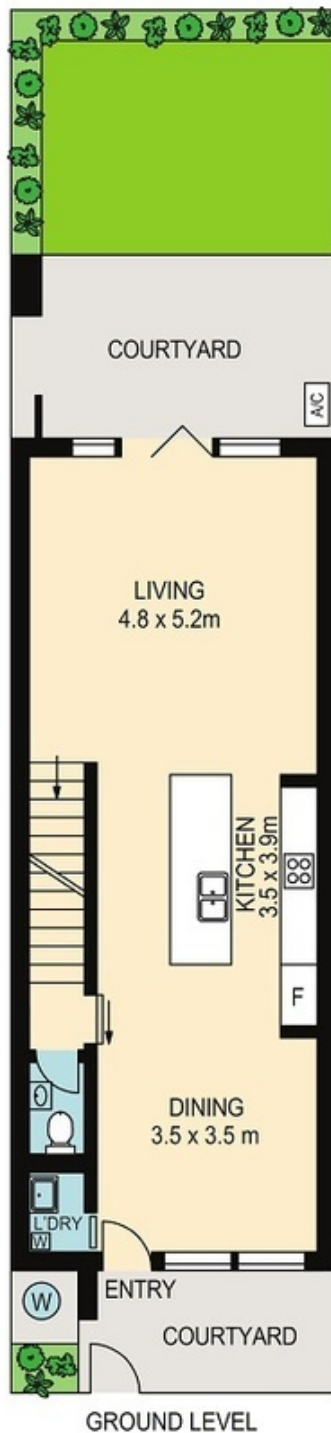
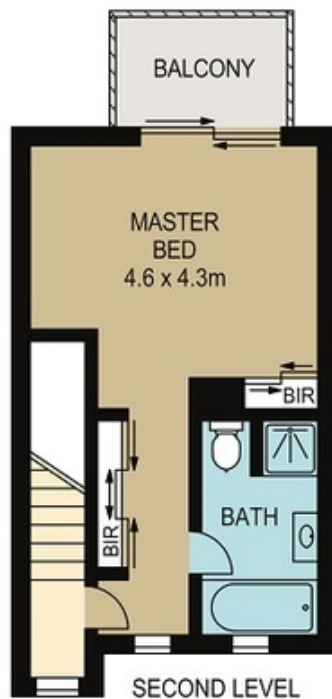
- * 3 bedroom plus study/family room with large balconies
- * Separate and spacious living and dining areas leading to large entertainers yard
- * Solid timber "yamoo" flooring
- * Large bathrooms and en-suite bathrooms with quality inclusions
- * Stunning matt Ceaserstone gourmet kitchen with Smeg gas cooking and dishwasher

Price : \$ 1,200,000

View : <https://www.rre.com.au/2392968>



Michael Michos
0296672868



2/1 MYRTLE STREET

BOTANY

DISCLAIMER: ARTUM PLANS SHOWN ARE FOR PRESENTATION PURPOSES & ARE NOT PART OF ANY LEGAL DOCUMENT. ALL MEASUREMENTS & FIGURES ARE APPROXIMATE. FLOOR PLANS, PHOTOGRAPHY & GRAPHIC DESIGN BY ARTUMPROPERTYMARKETING.COM.AU