

1/36 Rochester Street BOTANY NSW

2  1  1 

RRE properties is proud to offer this immaculate front facing affordable apartment that offers the perfect entry level purchase into Botany's booming property market. Freshly painted throughout this unit accommodates:

- *2 bedrooms, main with built-in
 - *Spacious combined lounge and dining
 - *Polished floors
 - *large updated kitchen
 - *Immaculate main bath with new vanity
 - *Carspace on title (Bonus of being situated directly next to the apartment with own driveway!).
- Location is terrific just minutes to Botany shopping centre, bus transportation and only 10 minutes to Sydney's CBD. Botany is quickly becoming a recognized jewel of Sydney's South East and has a huge future so act fast to secure this perfect first home or investment!

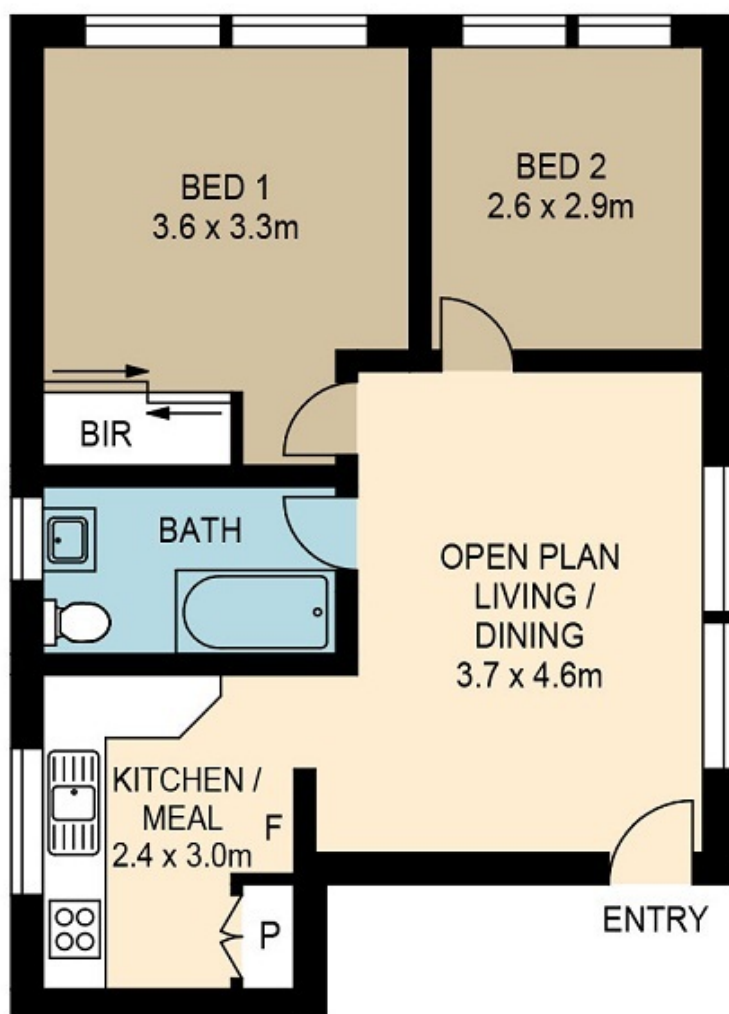
View : <https://www.rre.com.au/2292838>



Michael Michos
0296672868



CAR SPACE
2.4 x 6.3m



1/36 ROCHESTER STREET BOTANY

DISCLAIMER: ARTUM PLANS SHOWN ARE FOR PRESENTATION PURPOSES & ARE NOT PART OF ANY LEGAL DOCUMENT. ALL MEASUREMENTS & FIGURES ARE APPROXIMATE. FLOOR PLANS, PHOTOGRAPHY & GRAPHIC DESIGN BY ARTUMPROPERTYMARKETING.COM.AU