



19 Lever Street ROSEBERY NSW

3  1 

Sold under the hammer for \$120k over reserve by Rosebery's number 1 agent Michael Michos! What an opportunity to purchase this entry level home in Rosebery's booming property market. This deceased estate presents the perfect opportunity to knock down and build your dream family home or completely renovate and capitalize on this terrific location, set in a quiet cul-de-sac.

Features:

- *3 Bedrooms
- *Original kitchen and bathroom
- *Spacious lounge area
- *Ample yard
- *Land Size (9.14 X 26.06) approximately 243sqm.

A rare opportunity that must be sold! Located close to all major amenities including Mascot shopping centre, train station, buzzing Rosebery cafe's, fine eateries,

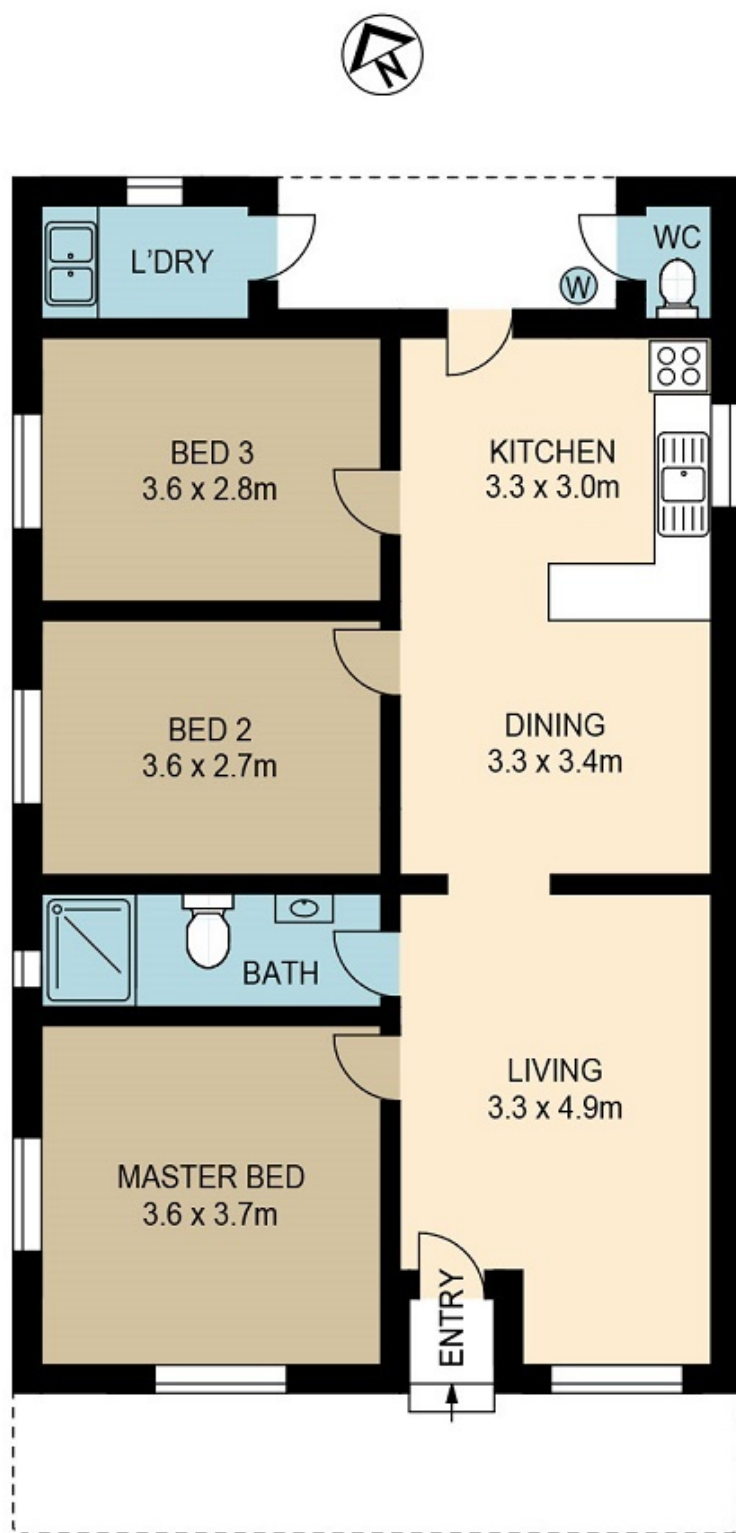
Price : \$ 900,000
Land Size : 243
View : <https://www.rre.com.au/1990514>



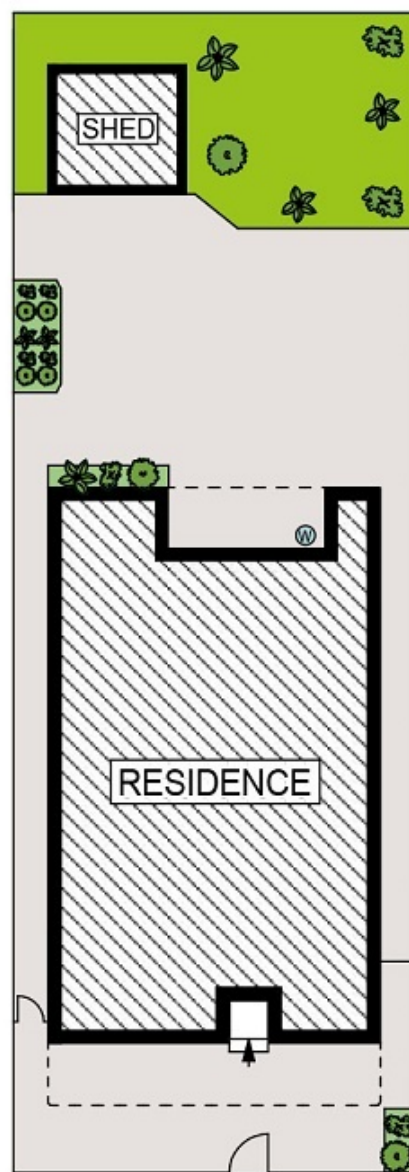
Michael Michos
0296672868



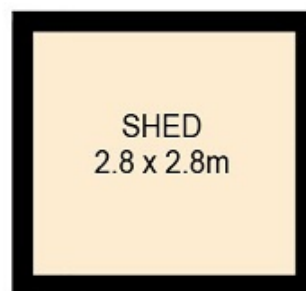
Jim Michos
0296672868



FLOOR PLAN



SITE PLAN



19 LEVER STREET ROSEBERY

DISCLAIMER: ARTUM PLANS SHOWN ARE FOR PRESENTATION PURPOSES & ARE NOT PART OF ANY LEGAL DOCUMENT. ALL MEASUREMENTS & FIGURES ARE APPROXIMATE. FLOOR PLANS, PHOTOGRAPHY & GRAPHIC DESIGN BY ARTUMPROPERTYMARKETING.COM.AU