

14/1421 Botany Road BOTANY NSW

1  1  1 

Boasting 117sqm on title, this brand new extra large two level contemporary executive apartment is located in the boutique Loxley complex. Unbeatable convenience with Botany Shops just seconds away! Top floor aspect boasts abundant cross flow and natural light throughout.

Features Include:

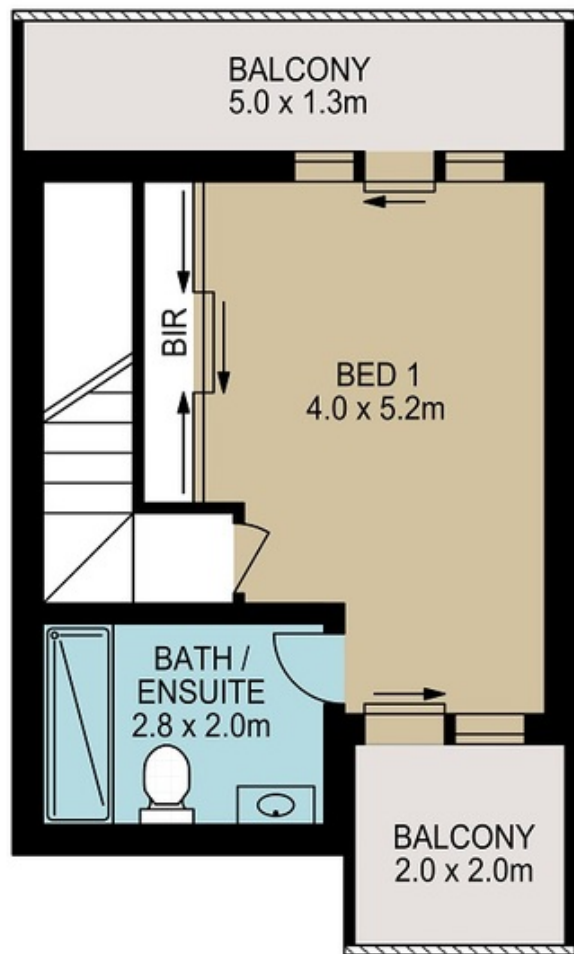
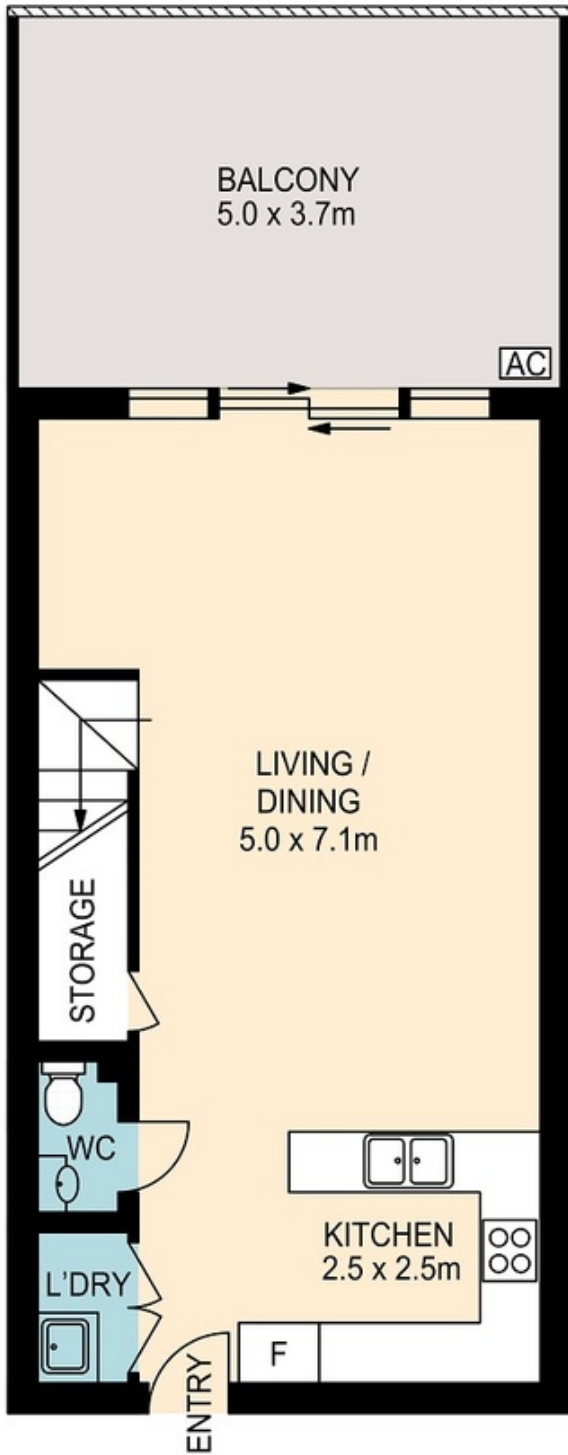
- *Massive main bedroom with two large balconies overlooking bay and district views
- *Spacious lounge and dining areas leading to huge open entertainer's balcony
- *Gourmet Ceaserstone kitchen with gas Smeg cooking and Smeg dishwasher
- *Guest w/c, internal laundry, extra storage
- *2 x w/c, Daikin air-conditioning
- *Contemporary main bathroom
- * Security Parking.

With expansive entertaining balconies on both levels and

View : <https://www.rre.com.au/1573903>



Michael Michos
0296672868



Apartments 13 & 14/ 1421 Botany Road, Botany

DISCLAIMER: ARTUM PLANS SHOWN ARE FOR PRESENTATION PURPOSES & ARE NOT PART OF ANY LEGAL DOCUMENT. ALL MEASUREMENTS & FIGURES ARE APPROXIMATE. FLOOR PLANS, PHOTOGRAPHY & GRAPHIC DESIGN BY ARTUMPROPERTYMARKETING.COM.AU