

### 13/1421 Botany Road BOTANY NSW

1  1  1 

Brand new, extra large two level contemporary executive apartment located in the boutique Loxley complex. Unbeatable convenience with Botany Shops just seconds away! Top floor aspect boasts abundant cross flow and natural light throughout.

#### Features Include:

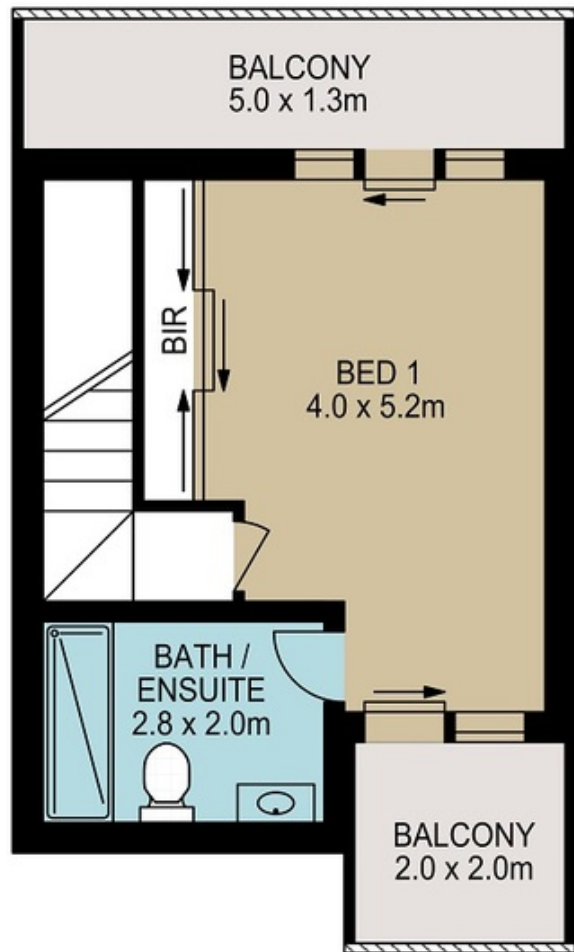
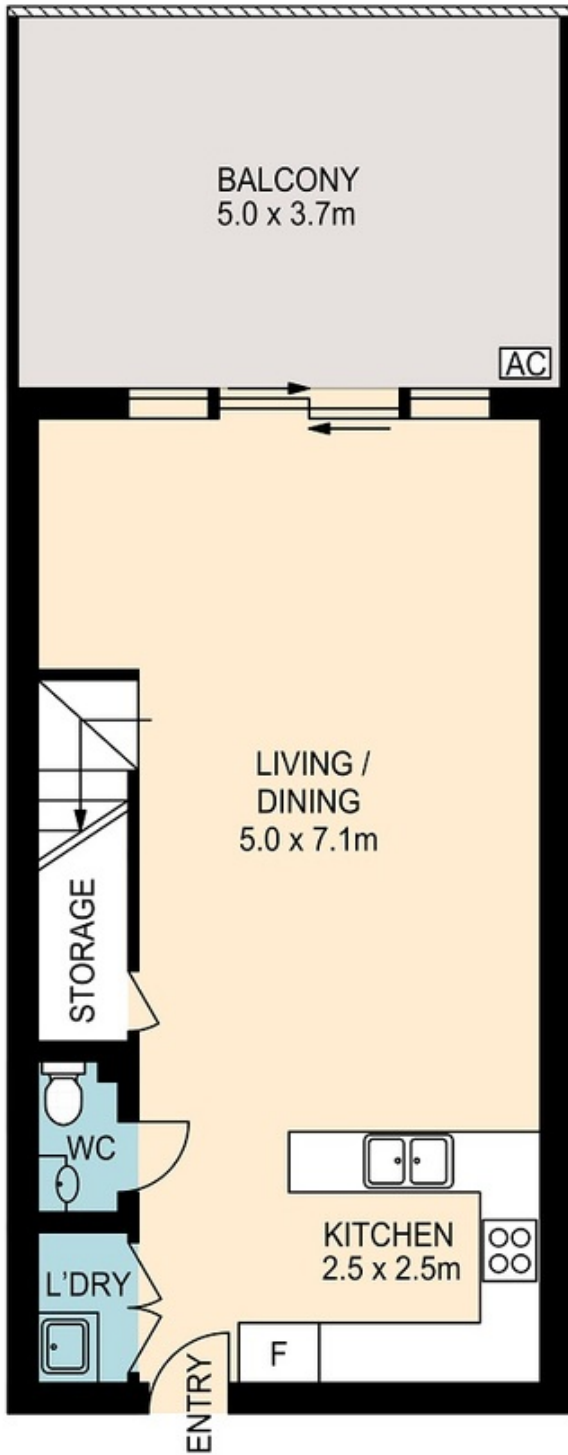
- \*Massive main bedroom with two large balconies overlooking bay and district views
- \*Spacious lounge and dining areas leading to huge open entertainer's balcony
- \*Gourmet Ceaserstone kitchen with gas & Smeg cooking and Smeg dishwasher
- \*Guest w/c, internal laundry, extra storage
- \*2 x w/c, Daikin air-conditioning
- \*Contemporary main bathroom
- \* Security Parking.

Total Area: 117sqm

View : <https://www.rre.com.au/1573409>



**Michael Michos**  
0296672868



**Apartments 13 & 14/ 1421 Botany Road, Botany**

DISCLAIMER: ARTUM PLANS SHOWN ARE FOR PRESENTATION PURPOSES & ARE NOT PART OF ANY LEGAL DOCUMENT. ALL MEASUREMENTS & FIGURES ARE APPROXIMATE. FLOOR PLANS, PHOTOGRAPHY & GRAPHIC DESIGN BY [ARTUMPROPERTYMARKETING.COM.AU](http://ARTUMPROPERTYMARKETING.COM.AU)