



1/10 George Street EASTLAKES NSW

4  2  2 

RRE Properties is proud to present this extra large immaculate contemporary townhouse located in a quiet residential street. Situated in a boutique development of only four homes, this property is the desirable front townhouse, street facing with a perfect northerly aspect. A sensational rare opportunity for the large family, features include:

- *Front Townhouse, North Aspect
- *Expansive lounge and dining areas with access to outdoor entertaining areas
- *Large Gourmet granite kitchen with appliances
- *4 Large bedrooms with built-ins (2 with balconies)
- *Master main en-suite with balcony
- *Contemporary full main bathroom
- *Solar Power hot water system
- *Downstairs guest w/c, internal laundry & alarm system
- *Lock-up Garage plus carport and visitors parking

Price : \$ 920,000

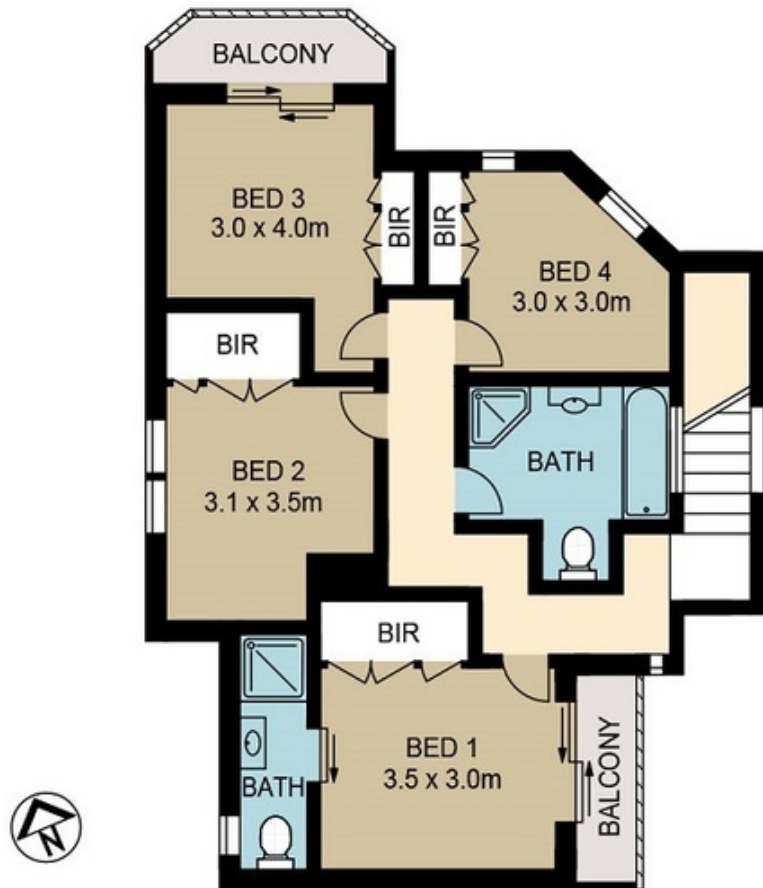
View : <https://www.rre.com.au/1534206>



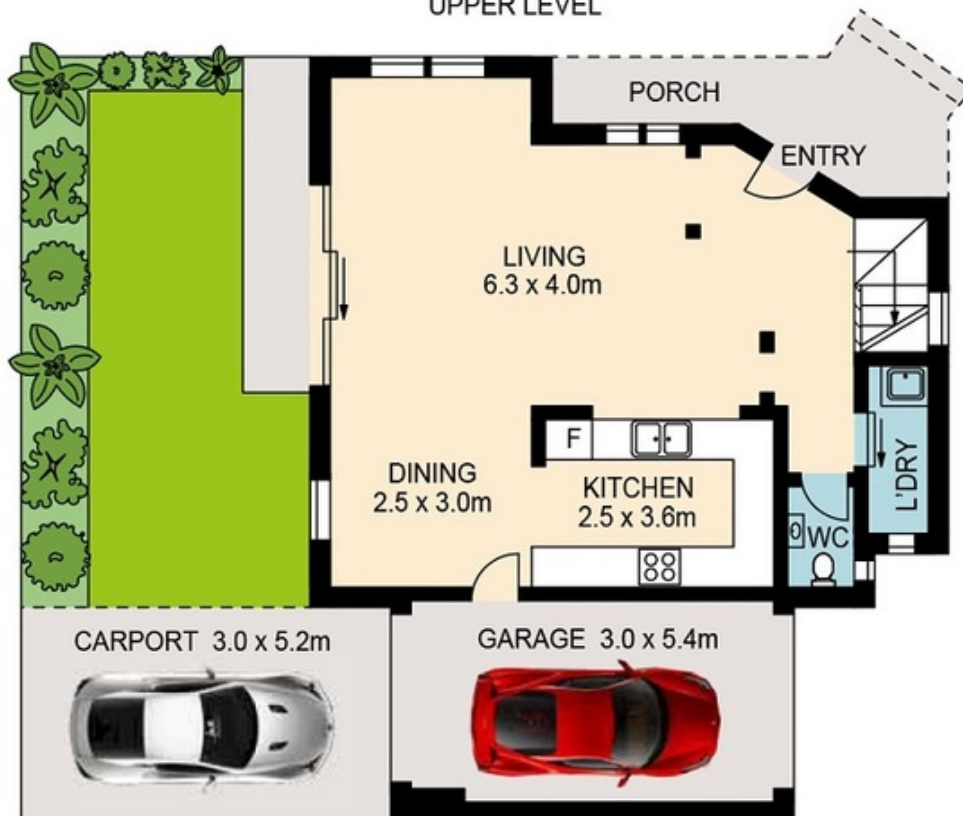
Michael Michos
0296672868



Jim Michos
0296672868



UPPER LEVEL



ENTRY LEVEL



1/10 GEORGE STREET EASTLAKES

DISCLAIMER: ARTUM PLANS SHOWN ARE FOR PRESENTATION PURPOSES & ARE NOT PART OF ANY LEGAL DOCUMENT. ALL MEASUREMENTS & FIGURES ARE APPROXIMATE. FLOOR PLANS, PHOTOGRAPHY & GRAPHIC DESIGN BY ARTUMPROPERTYMARKETING.COM.AU