






1/21 Myrtle Street BOTANY NSW

3  3  2 

Remarkable brand new North facing end terrace located in one of Botany's most sought locations. Contemporary tri level design sumptuously finished in the finest designer inclusions creating a new benchmark for Botany.

This property makes its mark with extensive use of designer 'Grohe' tapware, Italian tiling, wall hung units and cleverly designed integrated storage and extra space throughout. An executive family retreat that offers both unequalled luxury and peaceful tree lined Golf course aspects that further enhance its wonderful appeal.

Ground Floor Boasts:

*Gourmet stone kitchen with delux Smeg Gas cooking, dishwasher and microwave unit

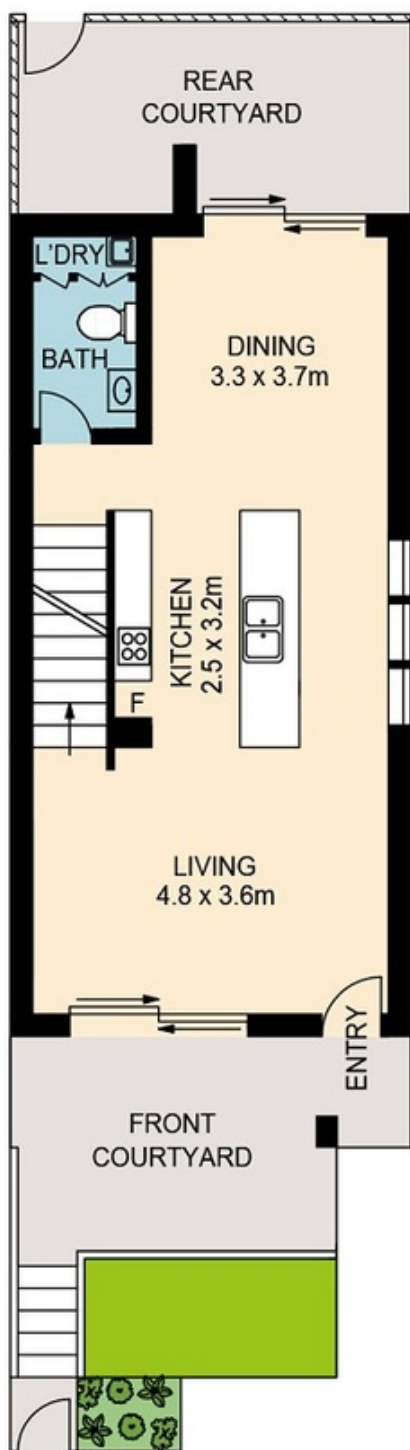
*Separate lounge and dining areas both leading to entertainers courtyards

Price : \$ 1,030,000

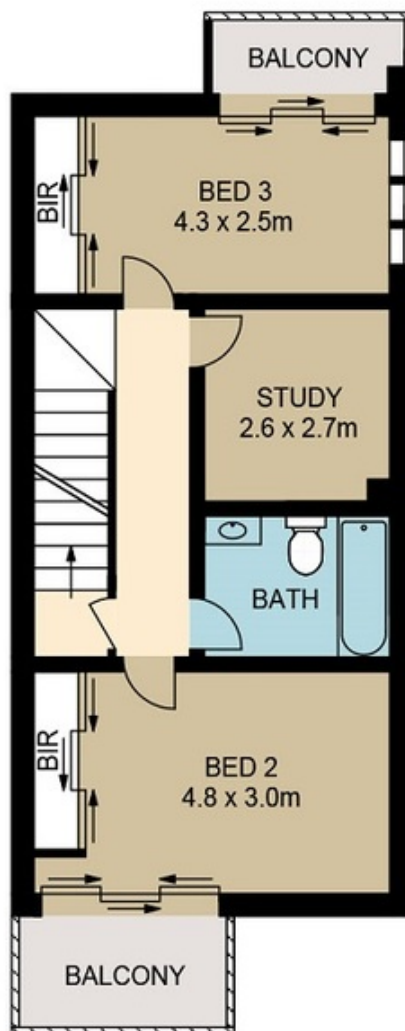
View : <https://www.rre.com.au/1493163>



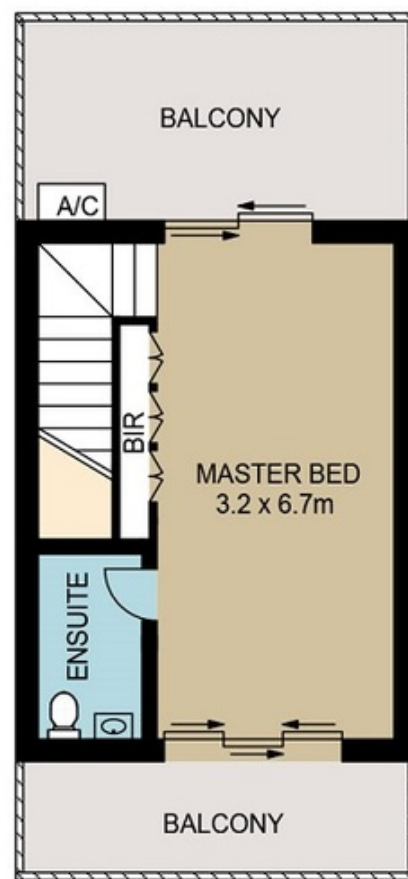
Michael Michos
0296672868



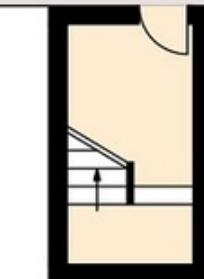
ENTRY / GROUND LEVEL



LEVEL 1



LEVEL 2



BASEMENT LEVEL



1 / 21 MYRTLE STREET

BOTANY

DISCLAIMER: ARTUM PLANS SHOWN ARE FOR PRESENTATION PURPOSES & ARE NOT PART OF ANY LEGAL DOCUMENT. ALL MEASUREMENTS & FIGURES ARE APPROXIMATE. FLOOR PLANS, PHOTOGRAPHY & GRAPHIC DESIGN BY ARTUMPROPERTYMARKETING.COM.AU