



### 38/23 Myrtle Street BOTANY NSW

3  2  2 

Simply stunning throughout, this huge penthouse has to be seen to be believed. Enjoying the top level position with a 2 storey layout, the views and sophistication of this apartment will have you falling in love at first sight.

Designed with both space and light as main characteristics, this contemporary residence enjoys quality fixtures and designer influences that have set the bar in Botany Bay for entertaining family sized penthouse living.

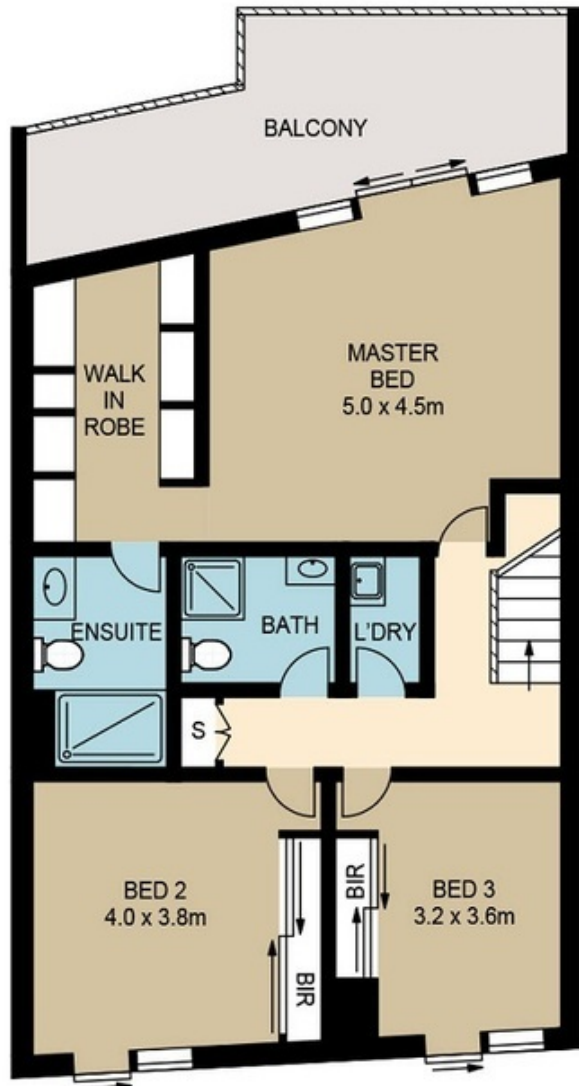
Features include:

- \*Huge lounge and dining leading to master balcony enjoying uninterrupted Golf Course views
- \*Designer gourmet stone kitchen with Smeg appliances
- \*Polished floors and ducted air-conditioning
- \*3 large bedrooms all with balconies
- \*Master main en-suite plus huge Walk-in robe
- \*Direct lift access from your floor to double security parking.
- \*Total 185sqm on title

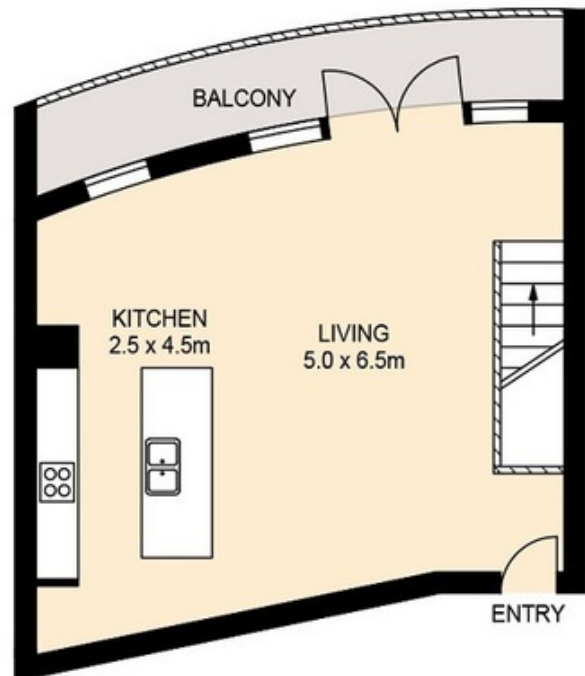
**Price** : \$ 890,000  
**Land Size** : 182  
**View** : <https://www.rre.com.au/1146848>



**Michael Michos**  
**0296672868**



LOWER LEVEL



ENTRY LEVEL



## PENTHOUSE 21-23 MYRTLE ST, BOTANY

DISCLAIMER: ARTUM PLANS SHOWN ARE FOR PRESENTATION PURPOSES & ARE NOT PART OF ANY LEGAL DOCUMENT. ALL MEASUREMENTS & FIGURES ARE APPROXIMATE. FLOOR PLANS, PHOTOGRAPHY & GRAPHIC DESIGN BY [ARTUMPROPERTYMARKETING.COM.AU](http://ARTUMPROPERTYMARKETING.COM.AU)