





3/1 Myrtle Street BOTANY NSW

3  2.500

 3 

Sumptuously finished in a crisp contemporary style, creating a new benchmark for Botany. Located in the best location, opposite Botany Aquatic Centre and Booralee Park, this fine properties offer the best in lifestyle and convenience. Features include:

- * 3 large Bedrooms over 2 levels all with built-ins
- * Huge master bedroom occupying entire 3rd level
- * Family and study rooms
- * Daiken air-conditioning throughout
- * Separate and spacious living and dining areas
- * Floorboards and carpet throughout
- * Large bathrooms and en-suite bathroom with quality inclusions
- * Stunning stone gourmet kitchen with Smeg gas cooking and dishwasher
- * Front yard with private entry and dual access
- * Expansive low maintenance rear entertainers courtyard

Price : \$ 980

View : <https://www.rre.com.au/1116374>



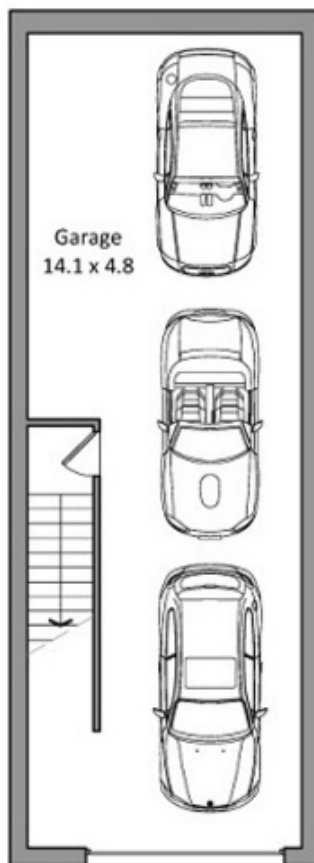
Michael Michos
0296672868



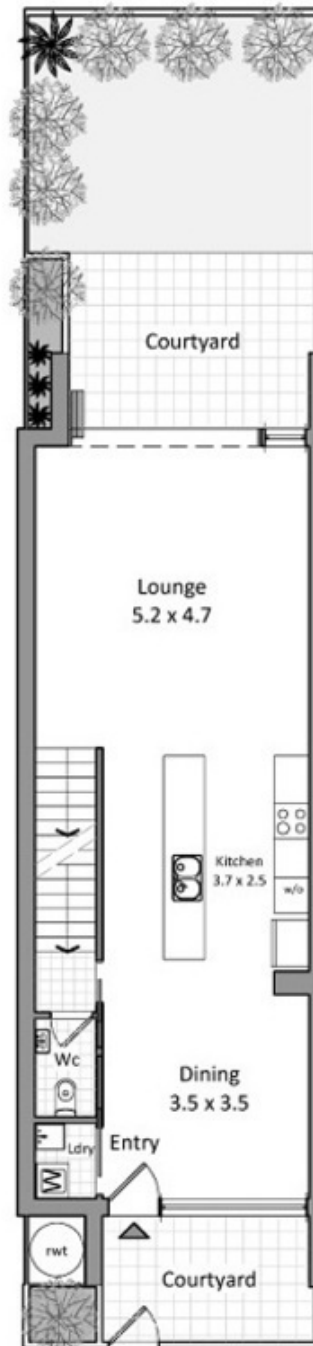
Andrea Kyriakou
02 9667 2868



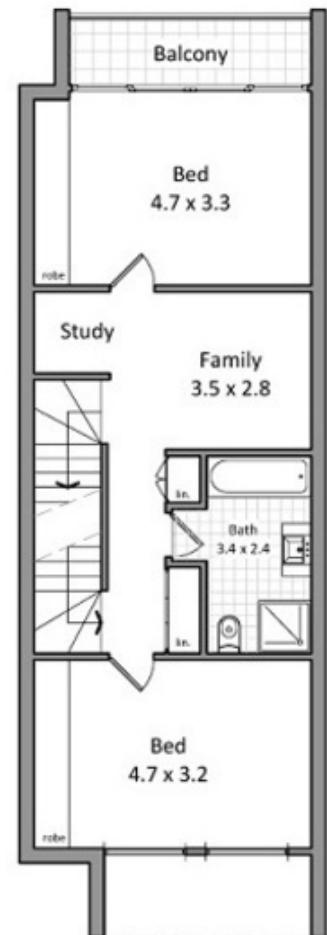
Level 2 floor plan



Basement level floor plan



Ground level floor plan



Level 1 floor plan