






3/1 Myrtle Street BOTANY NSW

3  2  3 

278sqm of pure luxury in one of Botany's best addresses. Sumptuously finished in a crisp contemporary style, creating a new benchmark for Botany. Located in the best location, opposite Botany Aquatic Centre and Booralee Park, these fine properties offer the best in lifestyle and convenience.

Some of the many features include:

- *3 large Bedrooms over 2 levels all with built-ins and balconies
- *Family and study rooms
- *Daiken air-conditioning throughout
- *Separate and spacious living and dining
- *Total area a huge 278sqm
- *Solid timber "yaomoo" flooring
- *Large bathrooms and en-suite bathrooms with quality

Price : \$ 975,000
Building Size : 278
View : <https://www.rre.com.au/1033261>



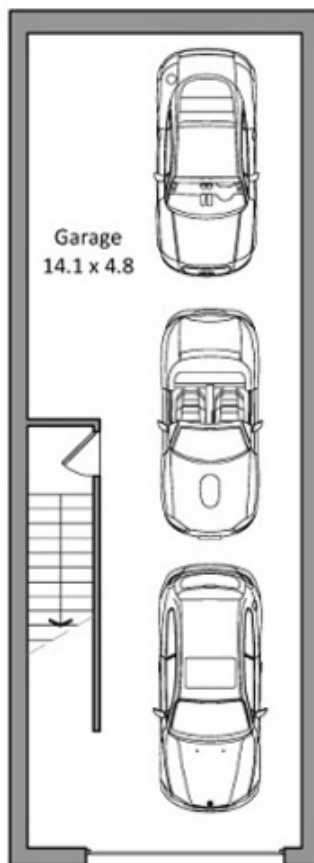
Michael Michos
0296672868



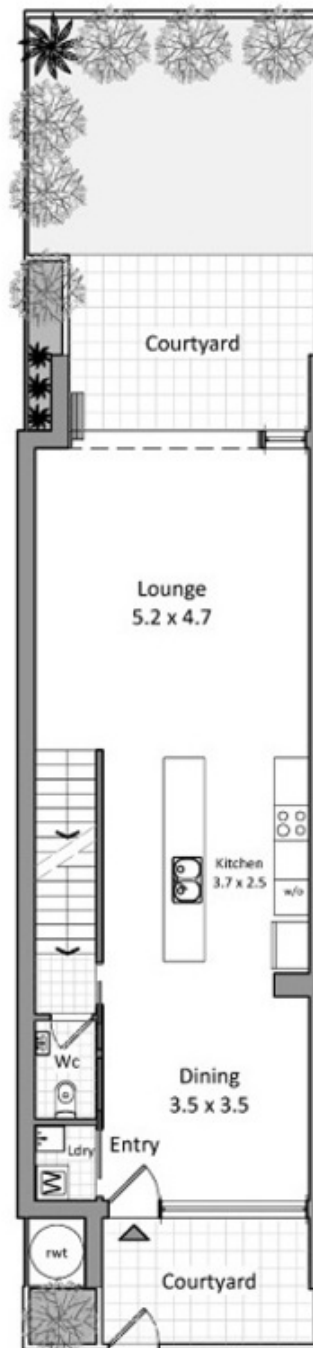
Jim Michos
0296672868



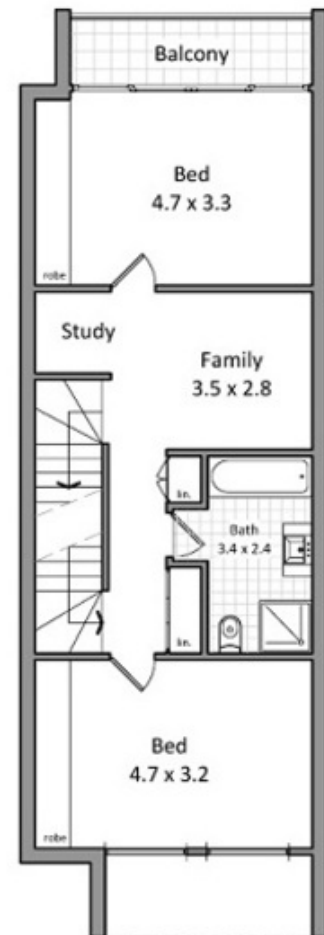
Level 2 floor plan



Basement level floor plan



Ground level floor plan



Level 1 floor plan