





4/1 Myrtle Street BOTANY NSW

3  2  3 

278sqm of pure luxury in one of Botany's best addresses. Sumptuously finished in a crisp contemporary style, creating a new benchmark for Botany. Located in the best location, opposite Botany Aquatic Centre and Booralee Park, these fine properties offer the best in lifestyle and convenience.

Price : \$ 975,000

View : <https://www.rre.com.au/1033260>

Some of the many features include:

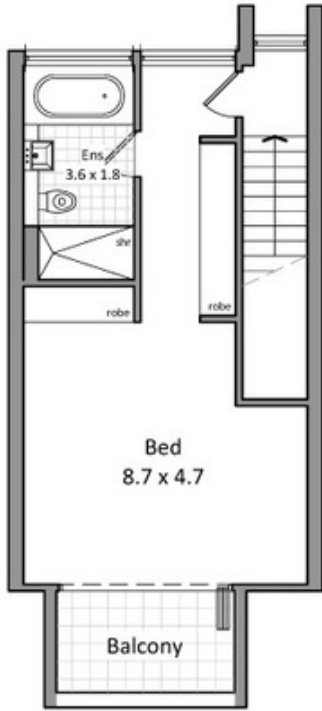
- *3 large Bedrooms over 2 levels all with built-ins and balconies
- *Family and study rooms
- *Daiken air-conditioning throughout
- *Separate and spacious living and dining
- *Total area a huge 278sqm
- *Solid timber "yaomoo" flooring
- *Large bathrooms and en-suite bathrooms with quality



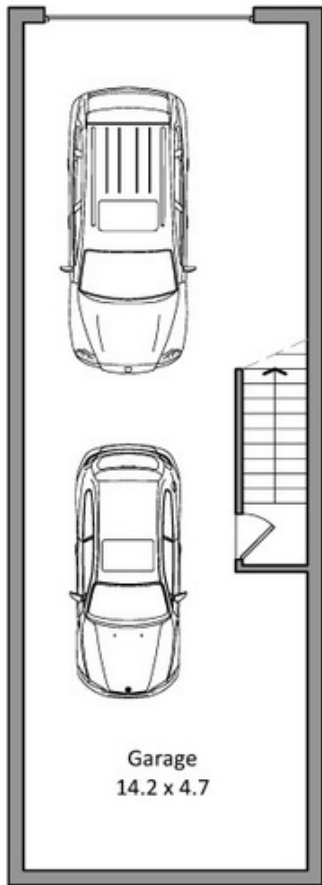
Michael Michos
0296672868



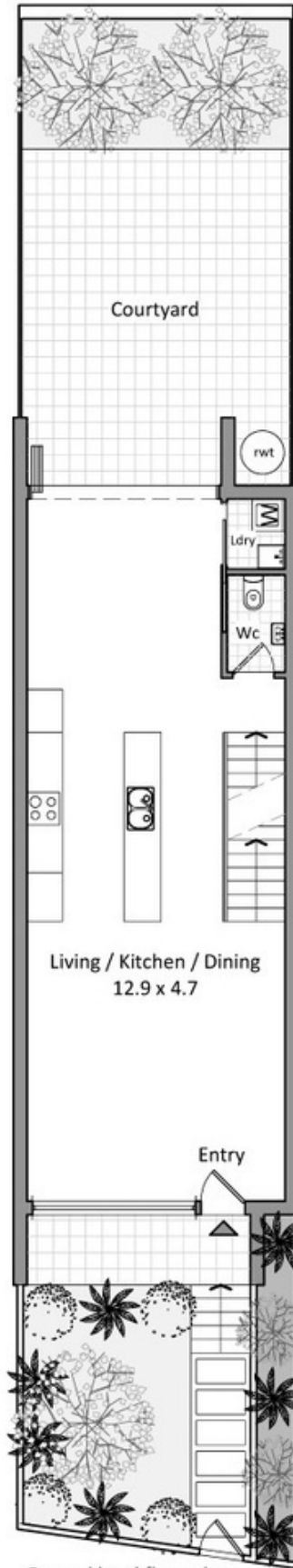
Jim Michos
0296672868



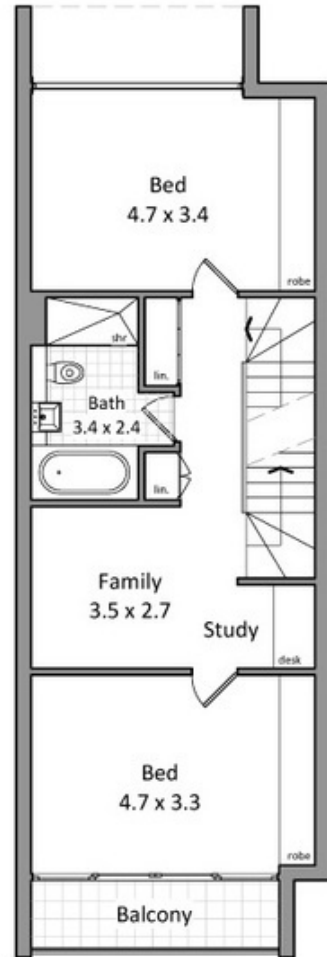
Level 2 floor plan



Basement level floor plan



Ground level floor plan



Level 1 floor plan