




5/1 Myrtle Street BOTANY NSW

3  2  3 

Only 1 left and it is a beauty as well!! Sumptuously finished in a crisp contemporary style, creating a new benchmark for Botany. Located in the best location, opposite Botany Aquatic Centre and Booralee Park, these fine properties offer the best in lifestyle and convenience.

Price : \$ 1,150,000

View : <https://www.rre.com.au/1033258>

Some of the many features include:

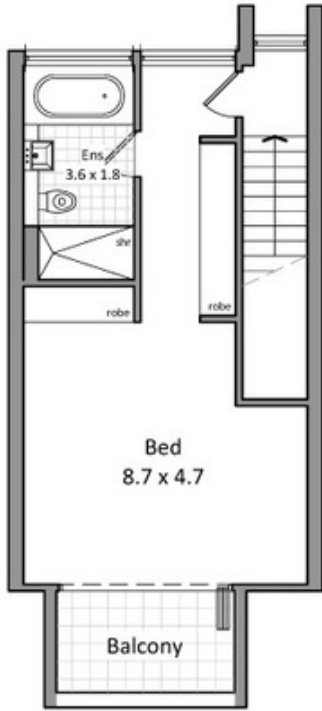
- *Daiken air-conditioning throughout
- *Separate and spacious living and dining
- *Total area a huge 278sqm
- *Solid timber "yaomoo" flooring
- *Large bathrooms and en-suite bathrooms with quality inclusions
- * 3 bedroom plus study/family room all boasting large balconies
- *Stunning matt Ceaserstone gourmet kitchen with Smeg



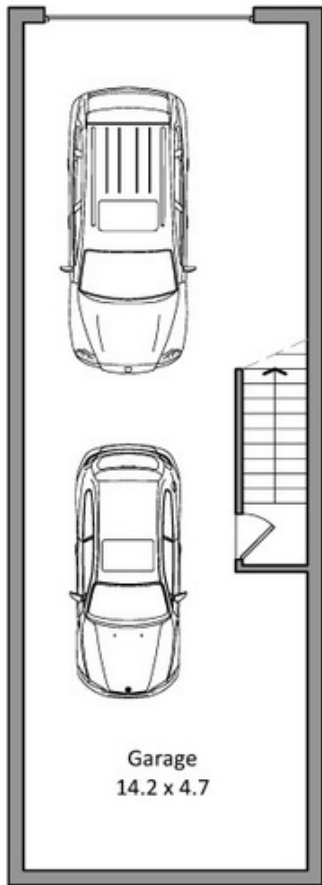
Michael Michos
0296672868



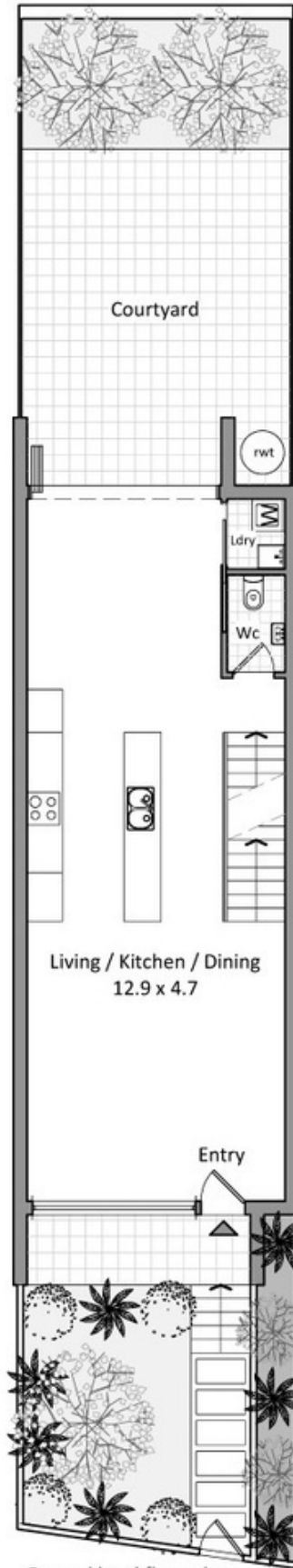
Jim Michos
0296672868



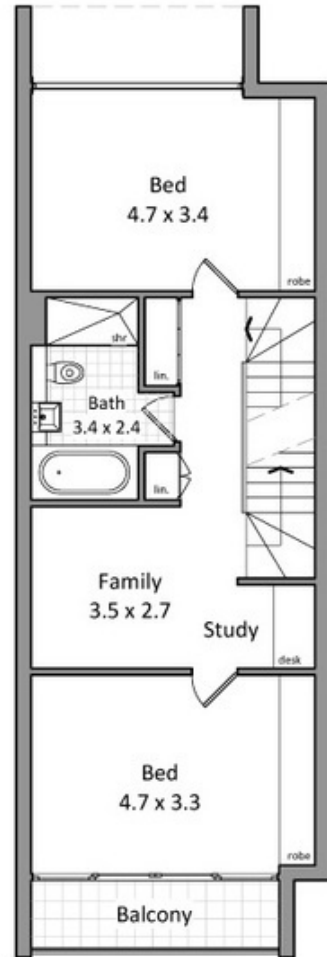
Level 2 floor plan



Basement level floor plan



Ground level floor plan



Level 1 floor plan