



3A Myrtle Street BOTANY NSW

4  2  3 

Located in one of Botany's best locations, this extra large three level north facing home is sure to impress. Boasting over 300sqm on title, stunning contemporary styling throughout and located directly opposite Botany Aquatic Centre / Booralee Park. Indeed the perfect low maintenance family home in this enviable location.

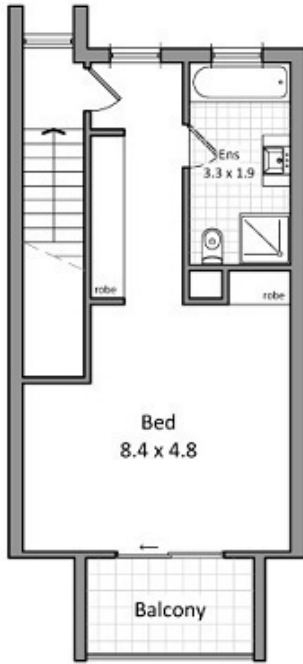
Price : \$ 1,480,000
View : <https://www.rre.com.au/1006794>

Some of the many features include:

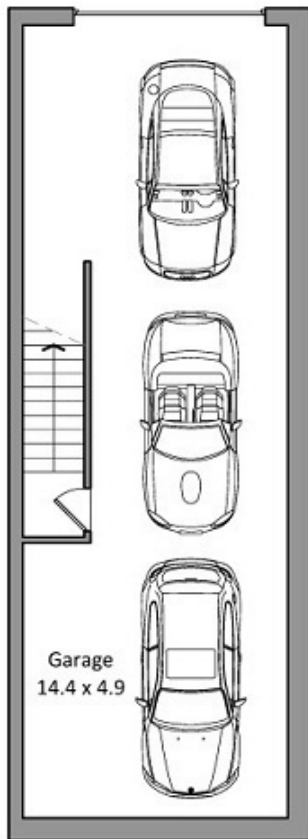
- *4 bedrooms with built-ins (3 with balconies)
- *Separate and spacious living and dining
- *Daiken air-conditioning throughout
- *Stunning main and master bedroom en-suite
- *Gourmet Ceaserstone kitchen with Smeg gas cooking and dishwasher
- *Huge Master bedroom occupying entire 3rd level
- *Expansive low maintenance rear entertainers courtyard
- *Internal access to huge 2-3 car electric garage



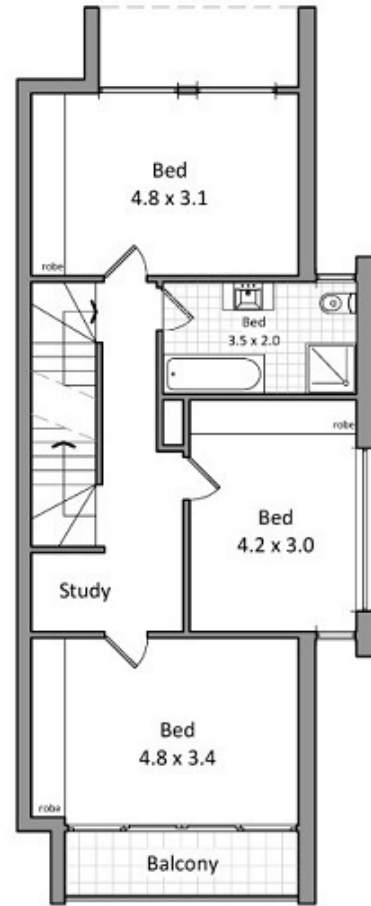
Michael Michos
0296672868



Level 2 floor plan



Ground level floor plan



Level 1 floor plan

This diagram is for illustrative purpose only. All reasonable care has been taken in the preparation, but no warranty is given as to the accuracy of the information. This document does not constitute any part of any offer or contract. Dimensions shown are approximate only. Prospective purchasers must rely on their own enquiries. Floor plan by Igor Nedic 0410581805/spinpix.com.au.

