






**8/1 Myrtle Street BOTANY NSW**

4  2  3 

Located in one of Botany's best addresses, directly opposite the park and Botany Pool, this brand new massive 3 level property is sure to impress, sumptuously finished in a crisp contemporary style, creating a new benchmark for Botany. This townhouse boasts an extraordinary size and is located on an end position with a wraparound yard! More like a house than a townhouse its features include:

- \*4 Large bedrooms with built-ins and master main en-suite
- \*Daiken air-conditioning throughout
- \*Separate and spacious living and dining
- \*Downstairs Study
- \*Total area a huge 372sqm
- \*Solid timber "yaomoo" flooring
- \*Large bathrooms and en-suite bathrooms with quality inclusions
- \*Stunning matt Ceaserstone gourmet kitchen with Smeg

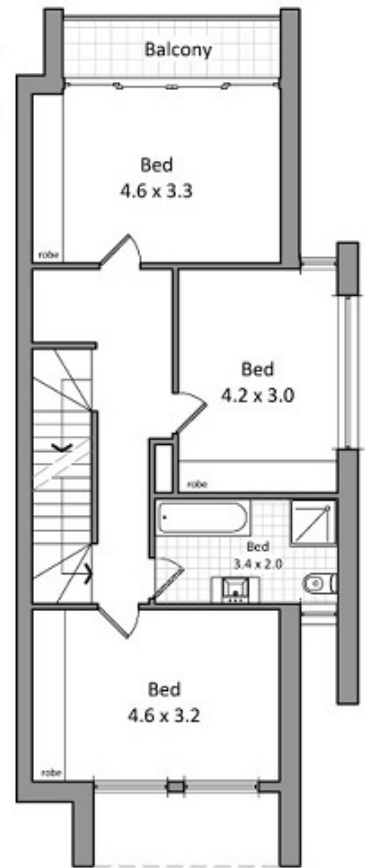
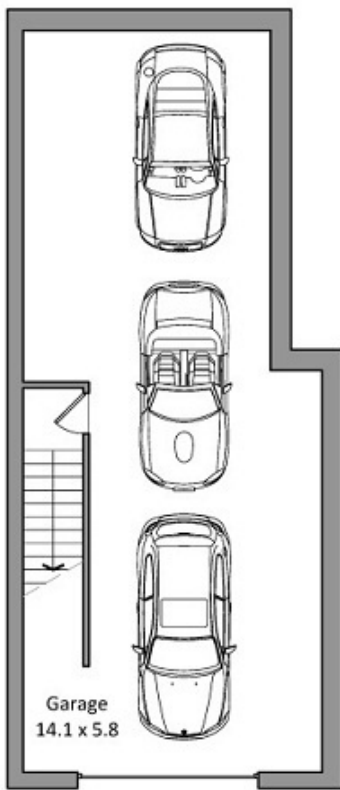
**Price** : \$ 1,100,000  
**Building Size** : 372  
**View** : <https://www.rre.com.au/1006793>



**Michael Michos**  
0296672868



**Jim Michos**  
0296672868



This diagram is for illustrative purpose only. All reasonable care has been taken in the preparation, but no warranty is given as to the accuracy of the information. This document does not constitute any part of any offer or contract. Dimensions shown are approximate only. Prospective purchasers must rely on their own enquiries. Floor plan by Igor Nedic 0410581805/spinpix.com.au.

Townhouse 8/1-3 Myrtle Street, Botany

