

1/1 Myrtle Street BOTANY NSW

4  2  3 

Located in one of Botany's best addresses, this brand new massive 3 level property is sure to impress, sumptuously finished in a crisp contemporary style, creating a new benchmark for Botany. Located in the best location, opposite Botany Aquatic Centre and Booralee Park, these fine properties offer the best in lifestyle and convenience.

Some of the many features include:

- *North Facing aspect
- *Daiken air-conditioning throughout
- *Separate and spacious living and dining
- *Solid timber "yaomoo" flooring
- *Large bathrooms and en-suite bathrooms with quality inclusions
- *Stunning matt Ceaserstone gourmet kitchen with Smeg gas cooking and dishwasher

Building Size : 312

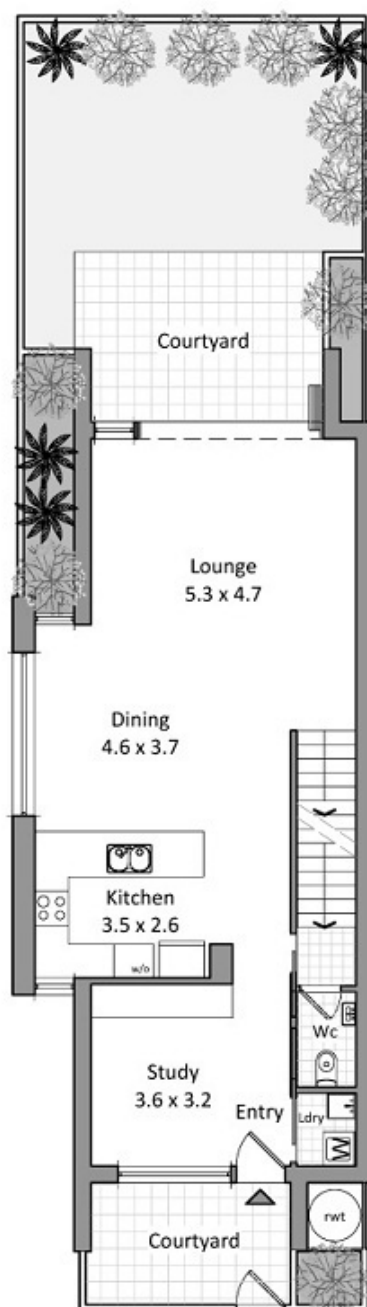
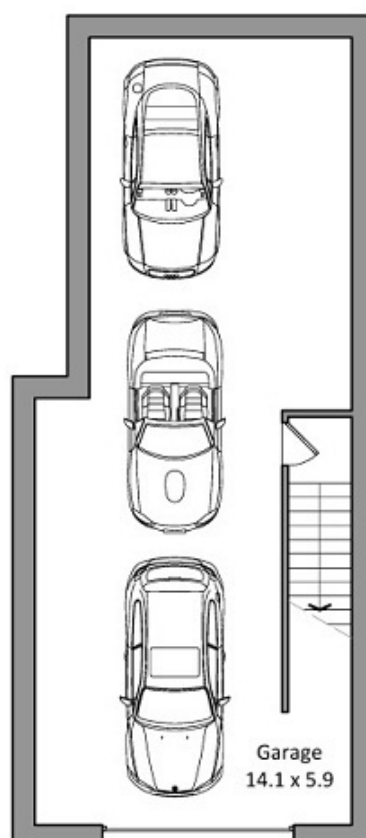
View : <https://www.rre.com.au/1006792>



Michael Michos
0296672868



Jim Michos
0296672868



This diagram is for illustrative purpose only. All reasonable care has been taken in the preparation, but no warranty is given as to the accuracy of the information. This document does not constitute any part of any offer or contract. Dimensions shown are approximate only. Prospective purchasers must rely on their own enquiries. Floor plan by Igor Nedic 0410581805/spinpix.com.au.

Townhouse 1/1-3 Myrtle Street, Botany

0 1 2 3 4m

